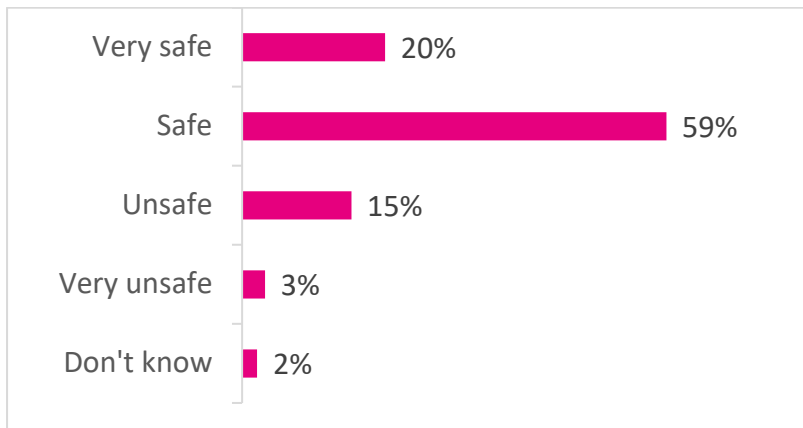




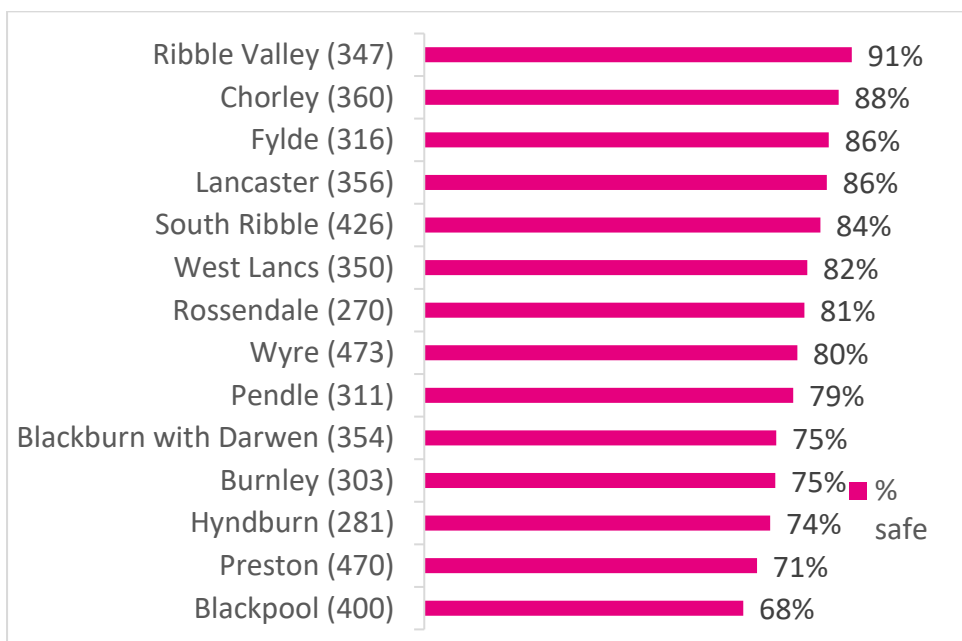
Lancashire Police and Crime Commissioner - Police and Crime Plan Survey 2021

- M·E·L Research conducted telephone interviews with a representative sample of residents aged 18+ across Lancashire (12 districts, plus the 2 unitary authorities of Blackpool and Blackburn with Darwen).
- 1,401 telephone surveys were completed between 21st July and 20th August 2021.
- 3,616 Lancashire residents completed via the online channel up until 13th September 2021

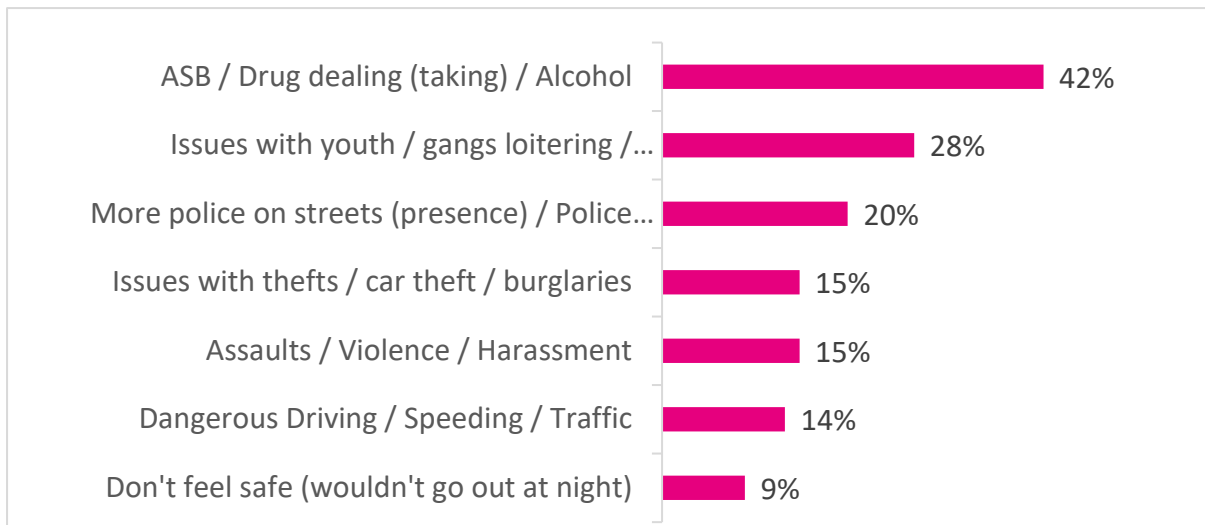
How safe do you feel where you live?



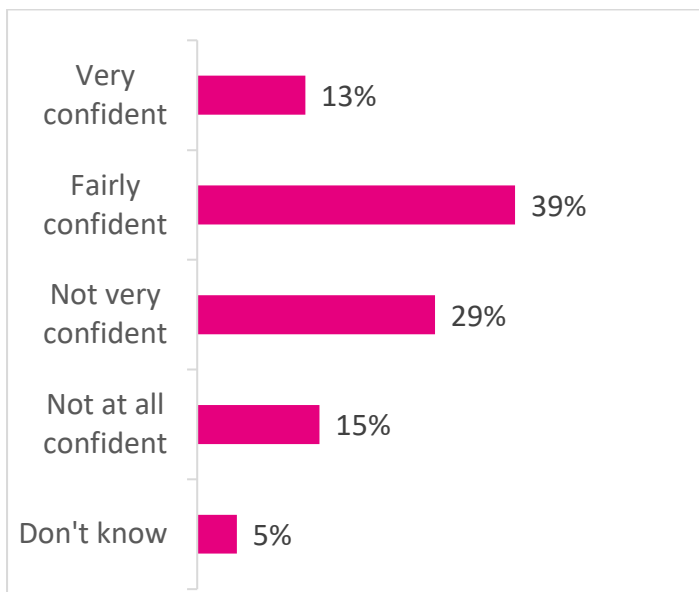
Feeling safe/very safe by area



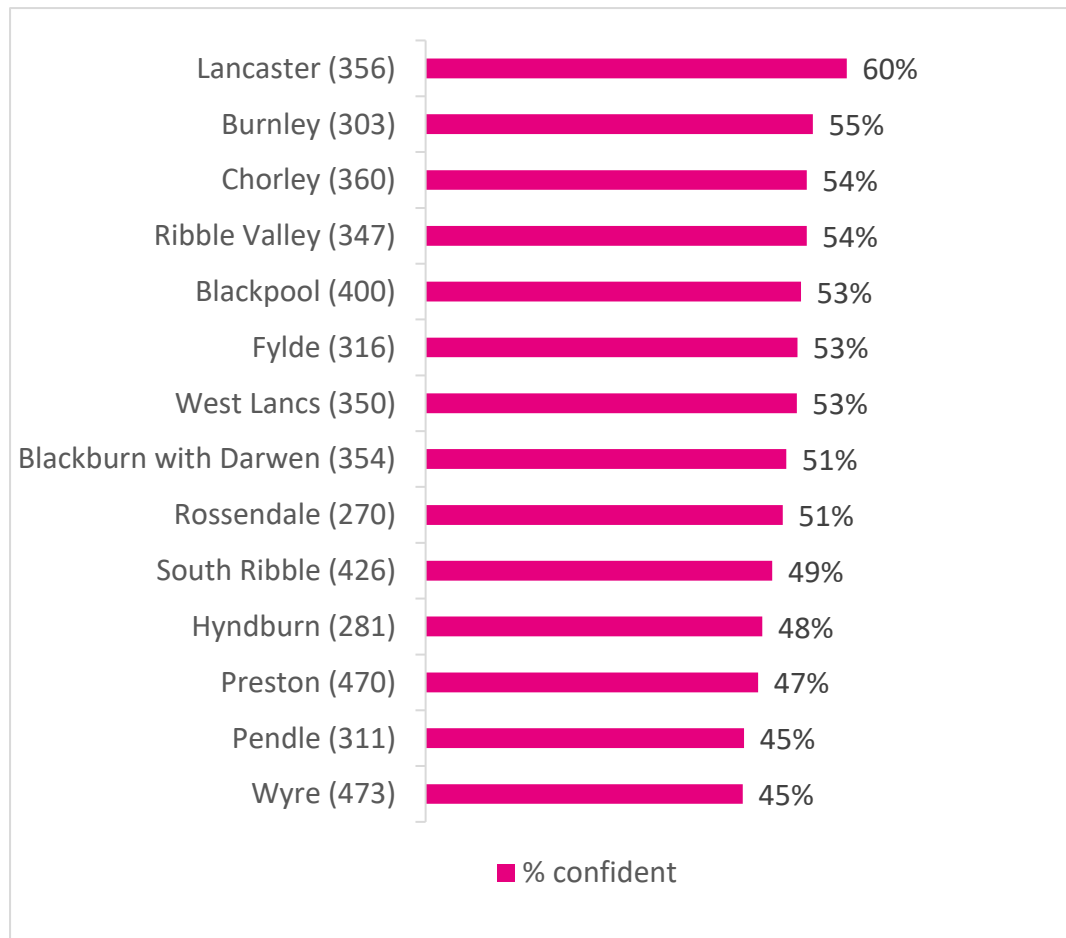
Most commonly cited reasons for feeling unsafe



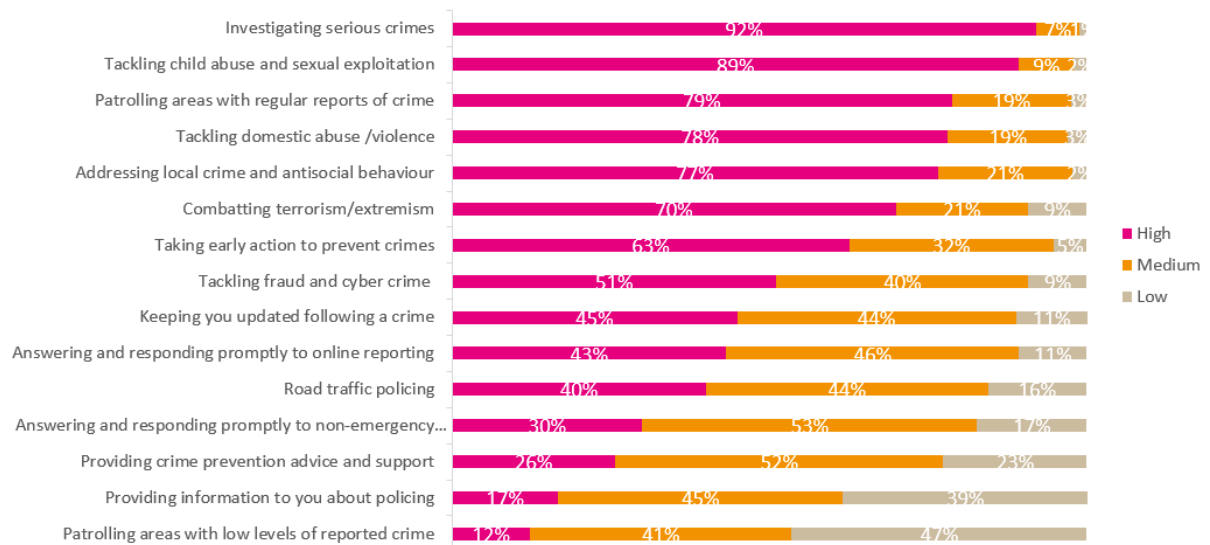
How confident are you that Lancashire police will be there if you need them?



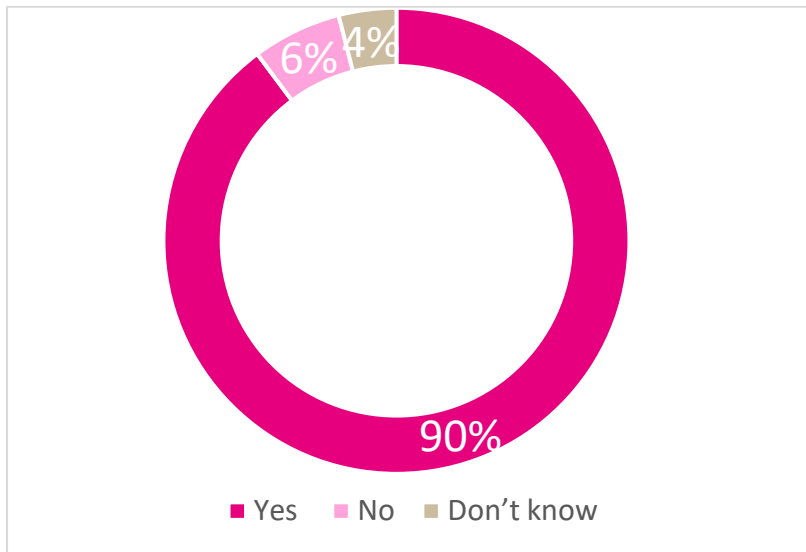
Confidence by area



Policing priorities



Do you think all areas of Lancashire, both rural and urban, should have a strong, dedicated police resource?



How would you like to be informed about policing in your area?

