

Scrutiny Meeting

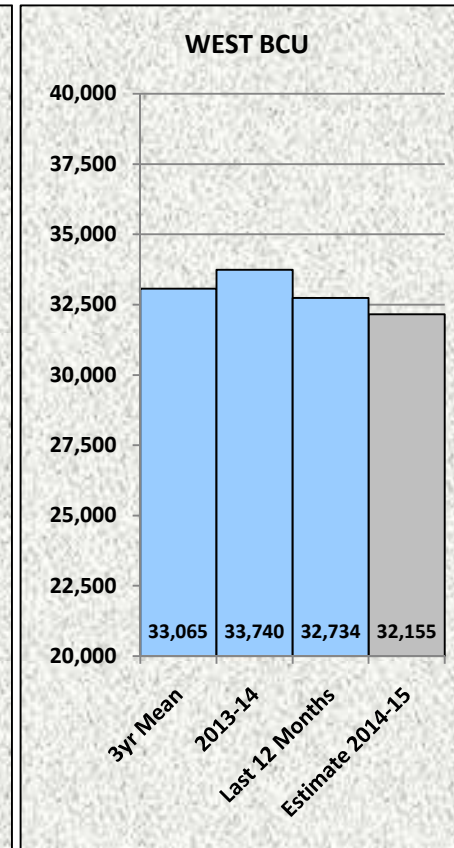
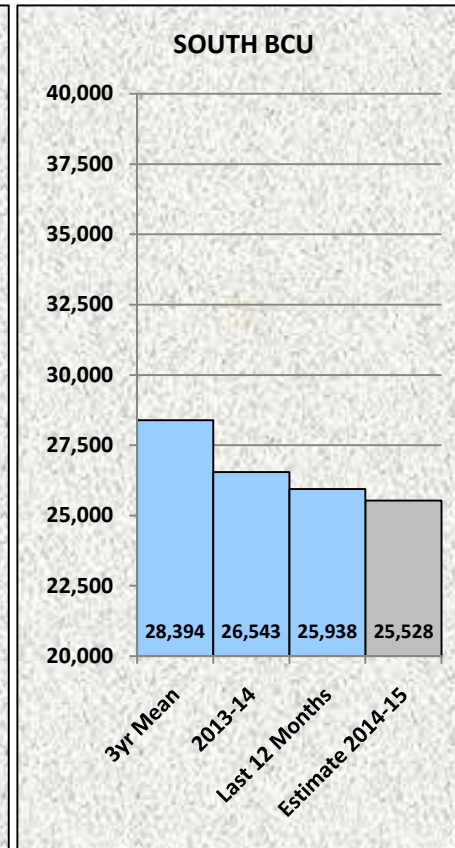
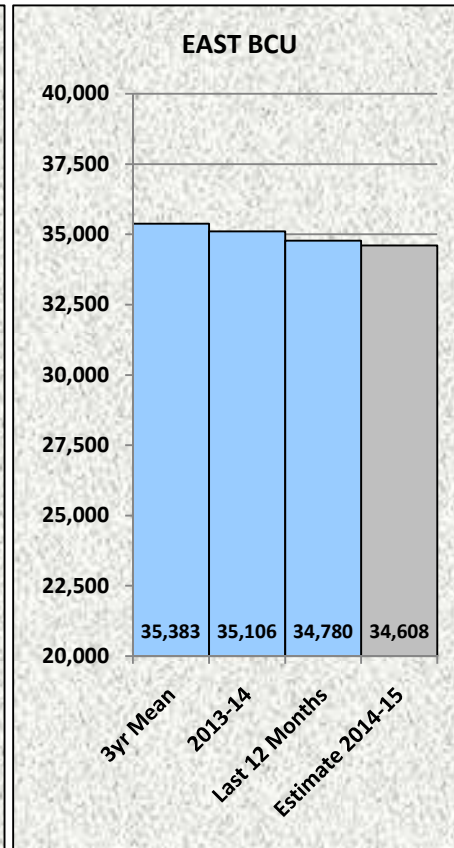
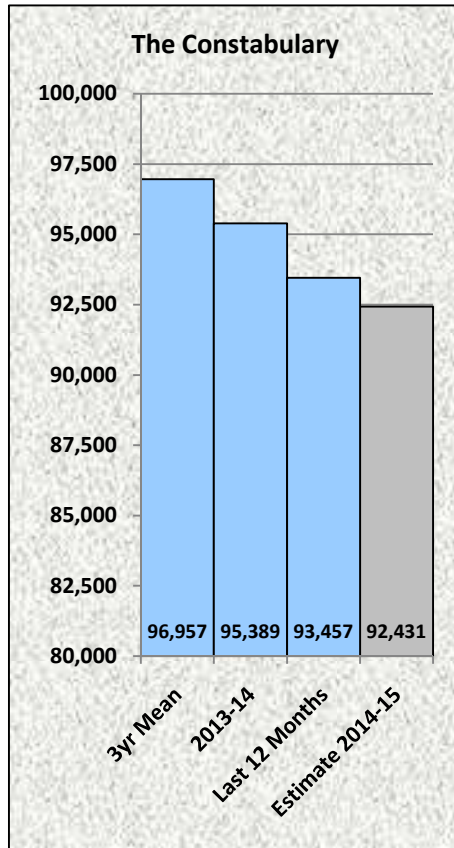
Monday 12th January 2015

All Recorded Crime

The Constabulary, Region and Most Similar Group

Areas	Earlier Period Dec-12 to Nov-13	Later Period Dec-13 to Nov-14	Change	
			Numeric	Percentage
England & Wales	3,457,938	3,483,915	+ 25,977	+ 0.8%
North West Region	443,459	461,378	+ 17,919	+ 4.0%
Cheshire	55,944	52,761	- 3,183	- 5.7%
Cumbria	24,041	24,383	+ 342	+ 1.4%
Greater Manchester	178,487	193,066	+ 14,579	+ 8.2%
Lancashire	93,958	94,107	+ 149	+ 0.2%
Merseyside	91,029	97,061	+ 6,032	+ 6.6%
Most Similar Group	737,740	749,449	+ 11,709	+ 1.6%
Lancashire	93,958	94,107	+ 149	+ 0.2%
South Wales	83,012	88,048	+ 5,036	+ 6.1%
South Yorkshire	91,674	93,911	+ 2,237	+ 2.4%
Northumbria	70,180	70,528	+ 348	+ 0.5%
Nottinghamshire	68,661	71,357	+ 2,696	+ 3.9%
Humberside	63,900	67,421	+ 3,521	+ 5.5%
Kent	105,366	111,609	+ 6,243	+ 5.9%
West Yorkshire	160,989	152,468	- 8,521	- 5.3%
Number of forces in England & Wales with an increase in this category			25	

All Recorded Crime The Constabulary and BCUs



The 2014-15 Estimate of 92,431
= 3.1% REDUCTION on 2013-14
= 4.7% REDUCTION on 3yr Mean
The long term trend (Apr-11 to most recent month) is DOWNWARDS but not significant

The 2014-15 Estimate of 34,608
= 1.4% REDUCTION on 2013-14
= 2.2% REDUCTION on 3yr Mean
The long term trend (Apr-11 to most recent month) is DOWNWARDS but not significant

The 2014-15 Estimate of 25,528
= 3.8% REDUCTION on 2013-14
= 10.1% REDUCTION on 3yr Mean
The long term trend (Apr-11 to most recent month) is DOWNWARDS AND SIGNIFICANT

The 2014-15 Estimate of 32,155
= 4.7% REDUCTION on 2013-14
= 2.8% REDUCTION on 3yr Mean
The long term trend (Apr-11 to most recent month) is DOWNWARDS but not significant

Rape

The Constabulary, Region and Most Similar Group



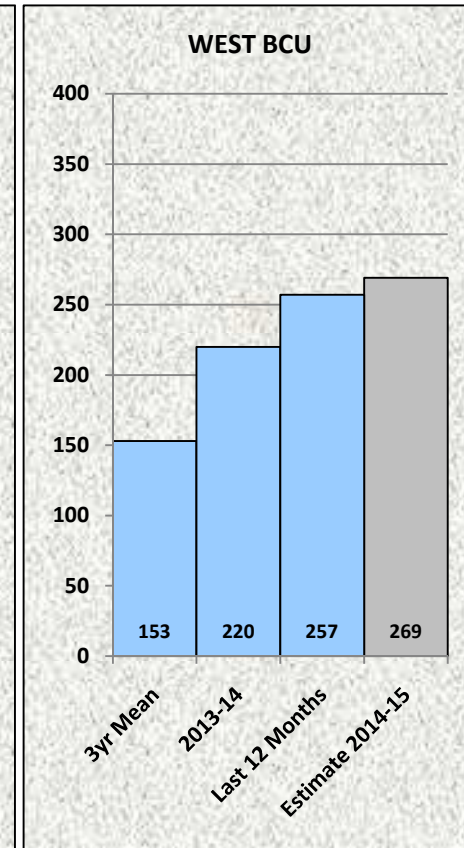
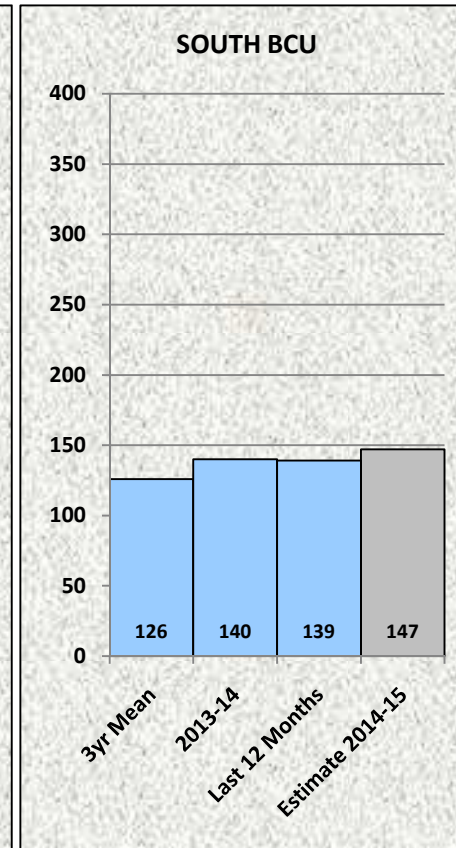
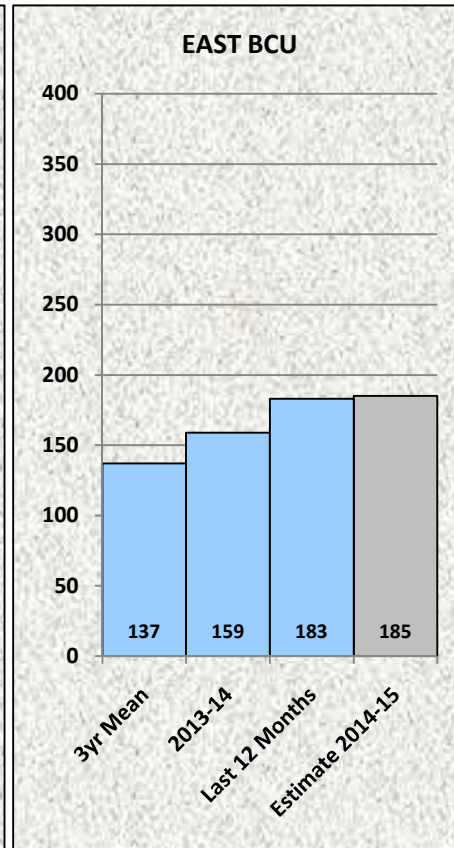
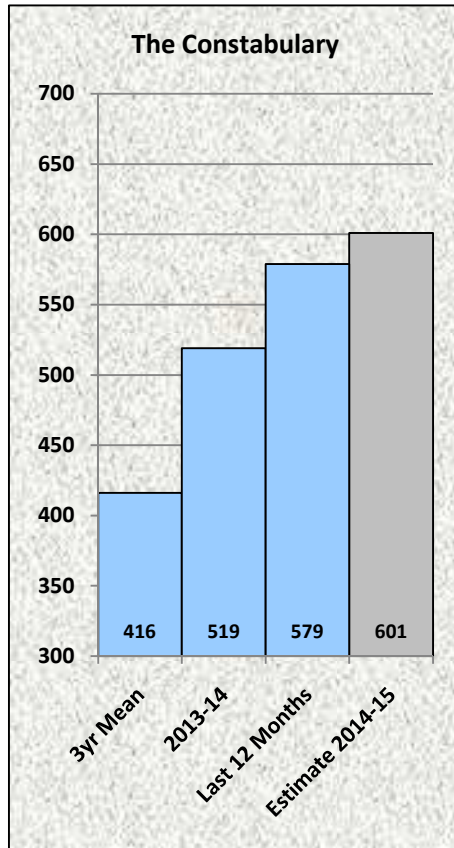
Lancashire
Constabulary

police and communities together

Areas	Earlier Period Dec-12 to Nov-13	Later Period Dec-13 to Nov-14	Change	
			Numeric	Percentage
England & Wales	18,914	25,915	+ 7,001	+ 37.0%
North West Region	2,311	3,182	+ 871	+ 37.7%
Cheshire	243	364	+ 121	+ 49.8%
Cumbria	115	179	+ 64	+ 55.7%
Greater Manchester	1,086	1,504	+ 418	+ 38.5%
Lancashire	483	580	+ 97	+ 20.1%
Merseyside	384	555	+ 171	+ 44.5%
Most Similar Group	4,091	5,364	+ 1,273	+ 31.1%
Lancashire	483	580	+ 97	+ 20.1%
South Wales	421	457	+ 36	+ 8.6%
South Yorkshire	414	651	+ 237	+ 57.2%
Northumbria	362	628	+ 266	+ 73.5%
Nottinghamshire	394	544	+ 150	+ 38.1%
Humberside	406	550	+ 144	+ 35.5%
Kent	647	861	+ 214	+ 33.1%
West Yorkshire	964	1,093	+ 129	+ 13.4%
Number of forces in England & Wales with an increase in this category			43	

Rape

The Constabulary and BCUs



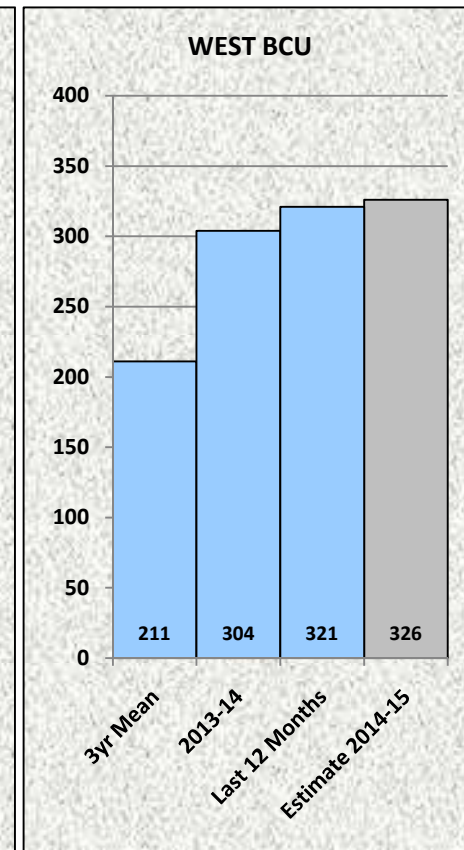
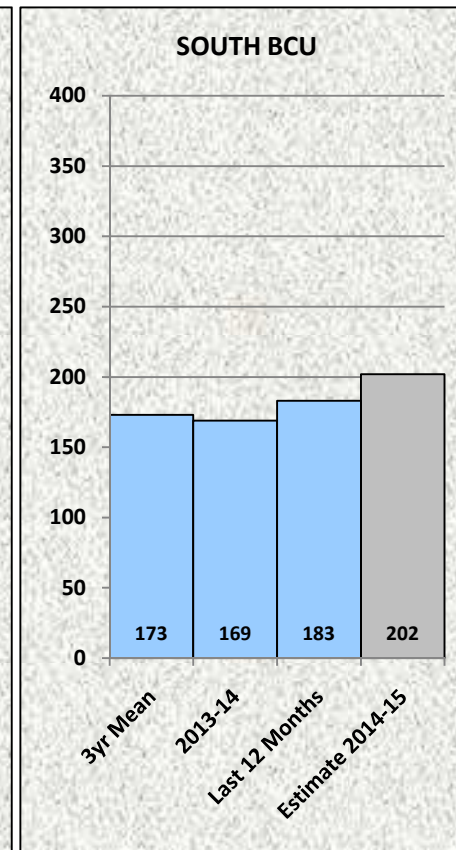
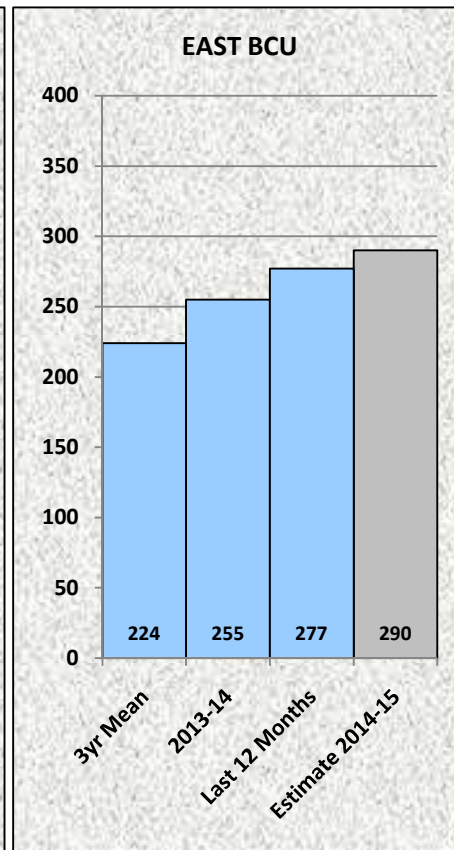
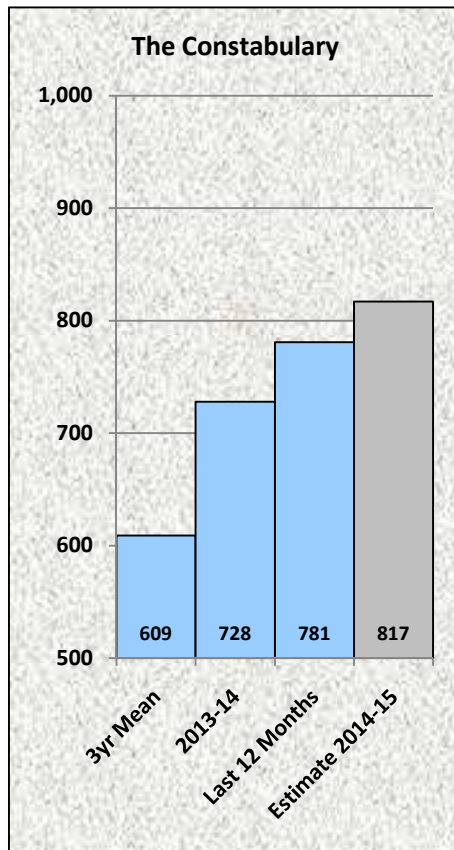
The 2014-15 Estimate of 601
= 15.8% INCREASE on 2013-14
= 44.5% INCREASE on 3yr Mean
The long term trend (Apr-11 to most recent month) is UPWARDS AND SIGNIFICANT

The 2014-15 Estimate of 185
= 16.4% INCREASE on 2013-14
= 35.0% INCREASE on 3yr Mean
The long term trend (Apr-11 to most recent month) is UPWARDS AND SIGNIFICANT

The 2014-15 Estimate of 147
= 5.0% INCREASE on 2013-14
= 16.7% INCREASE on 3yr Mean
The long term trend (Apr-11 to most recent month) is UPWARDS but not significant

The 2014-15 Estimate of 269
= 22.3% INCREASE on 2013-14
= 75.8% INCREASE on 3yr Mean
The long term trend (Apr-11 to most recent month) is UPWARDS AND SIGNIFICANT

Sexual Assault The Constabulary and BCUs



The 2014-15 Estimate of 817
= 12.2% INCREASE on 2013-14
= 34.2% INCREASE on 3yr Mean
The long term trend (Apr-11 to most recent month) is UPWARDS AND SIGNIFICANT

The 2014-15 Estimate of 290
= 13.7% INCREASE on 2013-14
= 29.5% INCREASE on 3yr Mean
The long term trend (Apr-11 to most recent month) is UPWARDS AND SIGNIFICANT

The 2014-15 Estimate of 202
= 19.5% INCREASE on 2013-14
= 16.8% INCREASE on 3yr Mean
The long term trend (Apr-11 to most recent month) is UPWARDS but not significant

The 2014-15 Estimate of 326
= 7.2% INCREASE on 2013-14
= 54.5% INCREASE on 3yr Mean
The long term trend (Apr-11 to most recent month) is UPWARDS AND SIGNIFICANT

Sexual Offences (Excluding Rape)

The Constabulary, Region and Most Similar Group

Areas	Earlier Period Dec-12 to Nov-13	Later Period Dec-13 to Nov-14	Change	
			Numeric	Percentage
England & Wales	40,670	51,298	+ 10,628	+ 26.1%
North West Region	5,279	6,519	+ 1,240	+ 23.5%
Cheshire	654	706	+ 52	+ 8.0%
Cumbria	271	432	+ 161	+ 59.4%
Greater Manchester	2,052	2,751	+ 699	+ 34.1%
Lancashire	1,347	1,365	+ 18	+ 1.3%
Merseyside	955	1,265	+ 310	+ 32.5%
Most Similar Group	8,498	11,117	+ 2,619	+ 30.8%
Lancashire	1,347	1,365	+ 18	+ 1.3%
South Wales	935	1,185	+ 250	+ 26.7%
South Yorkshire	791	1,435	+ 644	+ 81.4%
Northumbria	672	1,110	+ 438	+ 65.2%
Nottinghamshire	717	1,023	+ 306	+ 42.7%
Humberside	833	1,082	+ 249	+ 29.9%
Kent	1,386	1,662	+ 276	+ 19.9%
West Yorkshire	1,817	2,255	+ 438	+ 24.1%
Number of forces in England & Wales with an increase in this category			43	

Sexual Offences (Excluding Rape) The Constabulary and BCUs

The 2014-15 Estimate of 1,396
= 2.5% INCREASE on 2013-14
= 23.6% INCREASE on 3yr Mean
The long term trend (Apr-11 to
most recent month) is
UPWARDS AND SIGNIFICANT

The 2014-15 Estimate of 502
= 0.2% INCREASE on 2013-14
= 19.0% INCREASE on 3yr Mean
The long term trend (Apr-11 to
most recent month) is
UPWARDS AND SIGNIFICANT

The 2014-15 Estimate of 366
= 3.7% INCREASE on 2013-14
= 14.0% INCREASE on 3yr Mean
The long term trend (Apr-11 to
most recent month) is
UPWARDS but not significant

The 2014-15 Estimate of 528
= 3.9% INCREASE on 2013-14
= 38.2% INCREASE on 3yr Mean
The long term trend (Apr-11 to
most recent month) is
UPWARDS AND SIGNIFICANT

Business Crime

The Constabulary and BCUs

The 2014-15 Estimate of 9,378
= 8.4% REDUCTION on 2013-14
= 0.3% REDUCTION on 3yr Mean
The long term trend (Apr-11 to
most recent month) is
DOWNWARDS but not significant

The 2014-15 Estimate of 3,174
= 13.6% REDUCTION on 2013-14
= 0.8% REDUCTION on 3yr Mean
The long term trend (Apr-11 to
most recent month) is
DOWNWARDS but not significant

The 2014-15 Estimate of 2,756
= 3.0% REDUCTION on 2013-14
= 2.6% REDUCTION on 3yr Mean
The long term trend (Apr-11 to
most recent month) is
DOWNWARDS but not significant

The 2014-15 Estimate of 3,441
= 7.5% REDUCTION on 2013-14
= 2.4% INCREASE on 3yr Mean
The long term trend (Apr-11 to
most recent month) is
UPWARDS but not significant

Shoplifting

The Constabulary, Region and Most Similar Group

Areas	Earlier Period Dec-12 to Nov-13	Later Period Dec-13 to Nov-14	Change	
			Numeric	Percentage
England & Wales	314,534	321,575	+ 7,041	+ 2.2%
North West Region	42,401	42,433	+ 32	+ 0.1%
Cheshire	6,762	6,359	- 403	- 6.0%
Cumbria	2,672	2,451	- 221	- 8.3%
Greater Manchester	14,380	15,345	+ 965	+ 6.7%
Lancashire	8,692	8,173	- 519	- 6.0%
Merseyside	9,895	10,105	+ 210	+ 2.1%
Most Similar Group	75,627	76,961	+ 1,334	+ 1.8%
Lancashire	8,692	8,173	- 519	- 6.0%
South Wales	8,133	8,823	+ 690	+ 8.5%
South Yorkshire	9,996	10,365	+ 369	+ 3.7%
Northumbria	8,913	9,298	+ 385	+ 4.3%
Nottinghamshire	7,575	7,604	+ 29	+ 0.4%
Humberside	7,234	7,712	+ 478	+ 6.6%
Kent	10,672	11,194	+ 522	+ 4.9%
West Yorkshire	14,412	13,792	- 620	- 4.3%
Number of forces in England & Wales with an increase in this category			25	

Shoplifting

The Constabulary and BCUs

The 2014-15 Estimate of 8,135
= 7.4% REDUCTION on 2013-14
= 1.4% REDUCTION on 3yr Mean
The long term trend (Apr-11 to
most recent month) is
DOWNWARDS but not significant

The 2014-15 Estimate of 2,634
= 11.0% REDUCTION on 2013-14
= 5.1% REDUCTION on 3yr Mean
The long term trend (Apr-11 to
most recent month) is
DOWNWARDS but not significant

The 2014-15 Estimate of 2,363
= 6.2% REDUCTION on 2013-14
= 3.2% REDUCTION on 3yr Mean
The long term trend (Apr-11 to
most recent month) is
DOWNWARDS but not significant

The 2014-15 Estimate of 3,097
= 6.4% REDUCTION on 2013-14
= 2.1% INCREASE on 3yr Mean
The long term trend (Apr-11 to
most recent month) is
DOWNWARDS but not significant

Hate Crime

The Constabulary and BCUs

The 2014-15 Estimate of 908
= 11.6% REDUCTION on 2013-14
= 2.3% INCREASE on 3yr Mean
The long term trend (Apr-11 to
most recent month) is
UPWARDS but not significant

The 2014-15 Estimate of 368
= 22.4% REDUCTION on 2013-14
= 6.1% REDUCTION on 3yr Mean
The long term trend (Apr-11 to
most recent month) is
DOWNWARDS but not significant

The 2014-15 Estimate of 271
= 6.7% INCREASE on 2013-14
= 6.3% INCREASE on 3yr Mean
The long term trend (Apr-11 to
most recent month) is
UPWARDS but not significant

The 2014-15 Estimate of 254
= 15.1% REDUCTION on 2013-14
= 6.3% INCREASE on 3yr Mean
The long term trend (Apr-11 to
most recent month) is
UPWARDS but not significant

Racially/Religiously Aggravated Offences

The Constabulary, Region and Most Similar Group

Areas	Earlier Period Dec-12 to Nov-13	Later Period Dec-13 to Nov-14	Change	
			Numeric	Percentage
England & Wales	29,255	33,712	+ 4,457	+ 15.2%
North West Region	4,422	5,166	+ 744	+ 16.8%
Cheshire	501	542	+ 41	+ 8.2%
Cumbria	155	176	+ 21	+ 13.5%
Greater Manchester	2,283	2,669	+ 386	+ 16.9%
Lancashire	492	472	- 20	- 4.1%
Merseyside	991	1,307	+ 316	+ 31.9%
Most Similar Group	5,133	5,433	+ 300	+ 5.8%
Lancashire	492	472	- 20	- 4.1%
South Wales	744	826	+ 82	+ 11.0%
South Yorkshire	484	551	+ 67	+ 13.8%
Northumbria	478	639	+ 161	+ 33.7%
Nottinghamshire	477	521	+ 44	+ 9.2%
Humberside	292	335	+ 43	+ 14.7%
Kent	641	702	+ 61	+ 9.5%
West Yorkshire	1,525	1,387	- 138	- 9.0%
Number of forces in England & Wales with an increase in this category			31	

Racially/Religiously Aggravated Crime

The Constabulary and BCUs



The 2014-15 Estimate of 379
= 19.4% REDUCTION on 2013-14
= 33.2% REDUCTION on 3yr Mean
The long term trend (Apr-11 to
most recent month) is
DOWNWARDS AND SIGNIFICANT

The 2014-15 Estimate of 162
= 25.0% REDUCTION on 2013-14
= 40.2% REDUCTION on 3yr Mean
The long term trend (Apr-11 to
most recent month) is
DOWNWARDS AND SIGNIFICANT

The 2014-15 Estimate of 106
= 19.7% REDUCTION on 2013-14
= 34.2% REDUCTION on 3yr Mean
The long term trend (Apr-11 to
most recent month) is
DOWNWARDS AND SIGNIFICANT

The 2014-15 Estimate of 109
= 10.7% REDUCTION on 2013-14
= 18.0% REDUCTION on 3yr Mean
The long term trend (Apr-11 to
most recent month) is
DOWNWARDS but not significant

Domestic Abuse

The Constabulary and BCUs

The 2014-15 Estimate of 8,685
= 4.3% REDUCTION on 2013-14
= 3.7% REDUCTION on 3yr Mean
The long term trend (Apr-11 to
most recent month) is
DOWNWARDS but not significant

The 2014-15 Estimate of 3,045
= 3.9% REDUCTION on 2013-14
= ALMOST EQUAL TO 3yr Mean
The long term trend (Apr-11 to
most recent month) is
DOWNWARDS but not significant

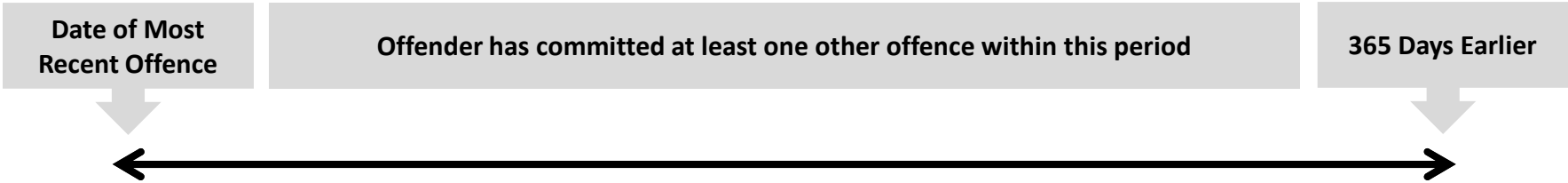
The 2014-15 Estimate of 2,381
= 9.0% REDUCTION on 2013-14
= 8.6% REDUCTION on 3yr Mean
The long term trend (Apr-11 to
most recent month) is
DOWNWARDS AND SIGNIFICANT

The 2014-15 Estimate of 3,203
= 2.7% REDUCTION on 2013-14
= 4.8% REDUCTION on 3yr Mean
The long term trend (Apr-11 to
most recent month) is
DOWNWARDS but not significant

Crimes Committed by Repeat Offenders – Oct-Dec 2014



Repeat Offender



Results are restricted to October-December because a system change in October 2013 means we can count repeat offenders accurately only from that date

Area	All Recorded Crime	Committed By Repeat Offenders	Number of Repeat Offenders
The Constabulary	22,598	2,636 (11.7%)	1,589
EAST Division	8,573	975 (11.4%)	
SOUTH Division	6,290	783 (12.4%)	
WEST Division	7,753	878 (11.3%)	



Crime Outcomes - Force Level – For Every 100 Crimes Recorded in the Nine Months from Apr-14 to Dec-14



Total
41.1

Total
24.7

Total
52.6

Total
71.2

Total
61.5

Total
67.0

Total
96.0

	All Crime	Burglary Dwelling	Robbery Personal	Assault (DV)	Assault (NDV)	Business Crime	Shop-Lifting
SANCTION DISPOSALS - offender has been dealt with by court appearance (charge, summons or TIC) or by caution	22.4	18.2	39.3	70.5	50.4	39.9	44.4
OTHER DISPOSALS - perpetrator has been dealt with by Fixed Penalty Notice, Cannabis Warning, or Community Resolution	7.2	0.3	0.5	0.7	1.7	15.4	16.6
EVIDENTIAL DIFFICULTY - victim does not support police action or victim DOES support action but there are other evidential difficulties	10.4	4.6	12.3	24.8	18.0	5.4	5.1
NO PROSECUTION - prosecution not in public interest, offender under age, offender/victim/key witness dead or ill, time limit expired	1.1	1.6	0.5	0.0	1.1	0.8	0.9

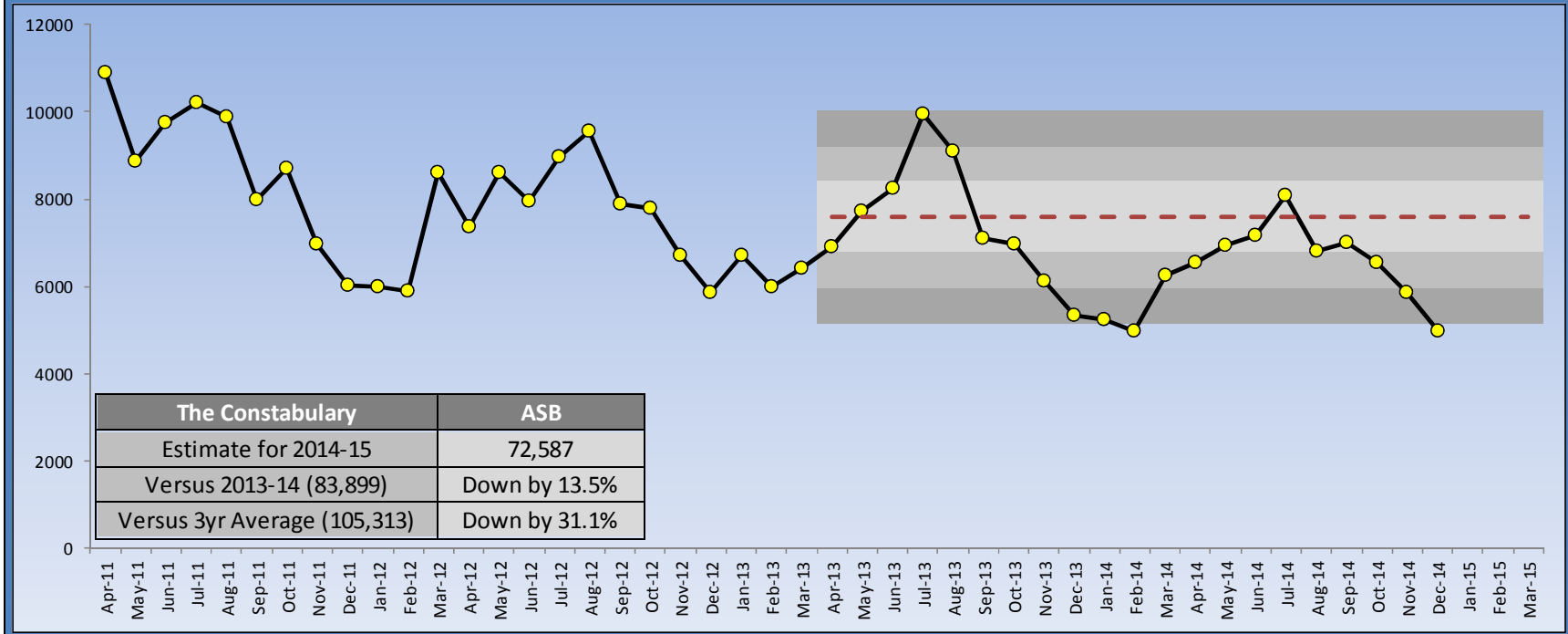
Scrutiny Meeting

Anti-Social Behaviour and Attendance at Grade 1 Incidents

Anti-Social Behaviour Incidents The Constabulary

SELECT AREA: The Constabulary
 SELECT CLASS: Anti Social Behaviour
 SELECT GRADE: All Grades

Click on the drop-down arrows on the right-hand edges of the combo boxes and choose from the lists that appear



	Apr	May	Jun	Jul	Aug	Sep	Oct	Nov	Dec	Jan	Feb	Mar	Total	Diff	% Change
2011/2012	10,892	8,875	9,750	10,211	9,890	7,995	8,710	6,979	6,022	5,976	5,892	8,603	99,795		
2012/2013	7,349	8,616	7,965	8,974	9,546	7,872	7,778	6,718	5,842	6,696	5,986	6,405	89,747	-10,048	-10.1%
2013/2014	6,912	7,731	8,253	9,942	9,088	7,103	6,977	6,134	5,328	5,230	4,965	6,236	83,899	-5,848	-6.5%
2014/2015	6,554	6,925	7,152	8,090	6,800	7,001	6,533	5,857	4,958				59,870	-7,598	-11.3%

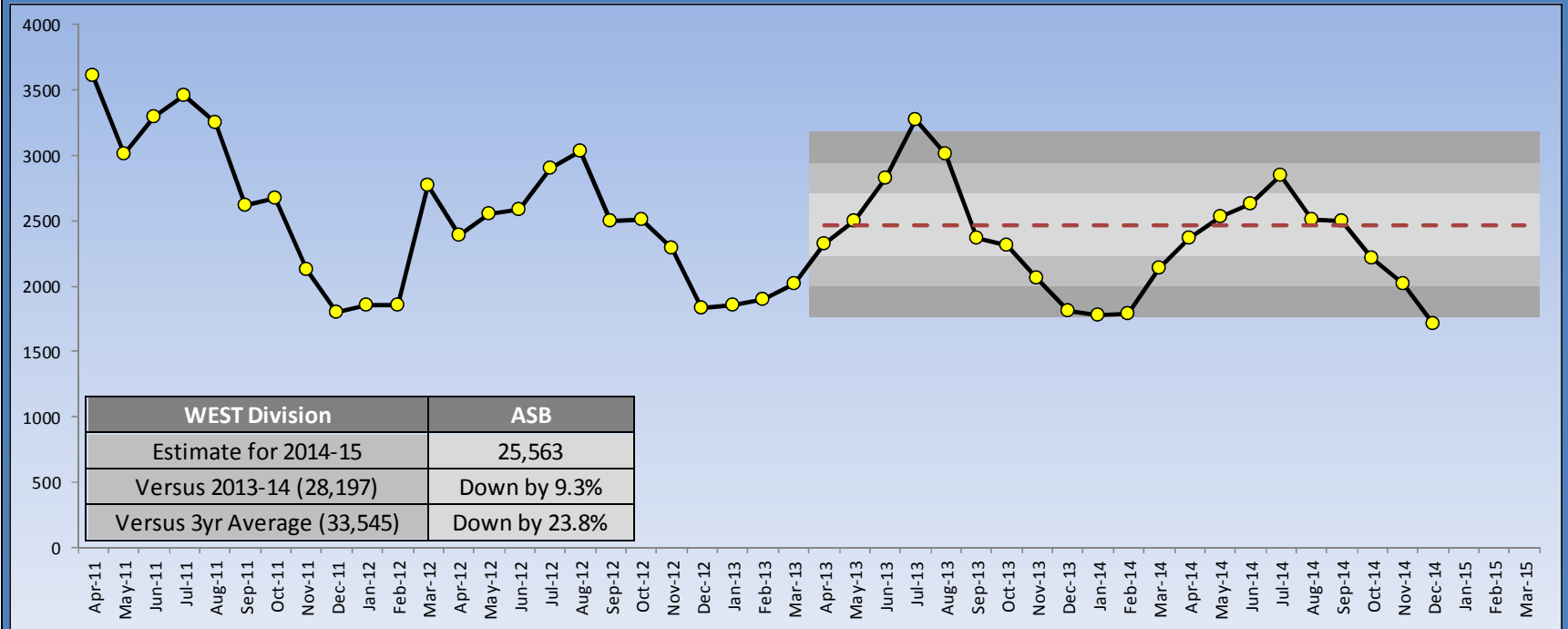
The dark red dashed line in the centre of the group of lines at the right-hand side of the chart represents the average monthly result for the last fiscal year. The grey bands define limits set at one, two and three standard deviations above and below the red average line (the standard deviation of the 36 monthly totals in the last three years). The difference and percentage change for 2014/2015 is against the same period in 2013/2014 i.e. a Year to Date comparison.

Anti-Social Behaviour Incidents WEST Division



SELECT AREA WEST Division
SELECT CLASS Anti Social Behaviour
SELECT GRADE All Grades

Click on the drop-down arrows on the right-hand edges of the combo boxes and choose from the lists that appear



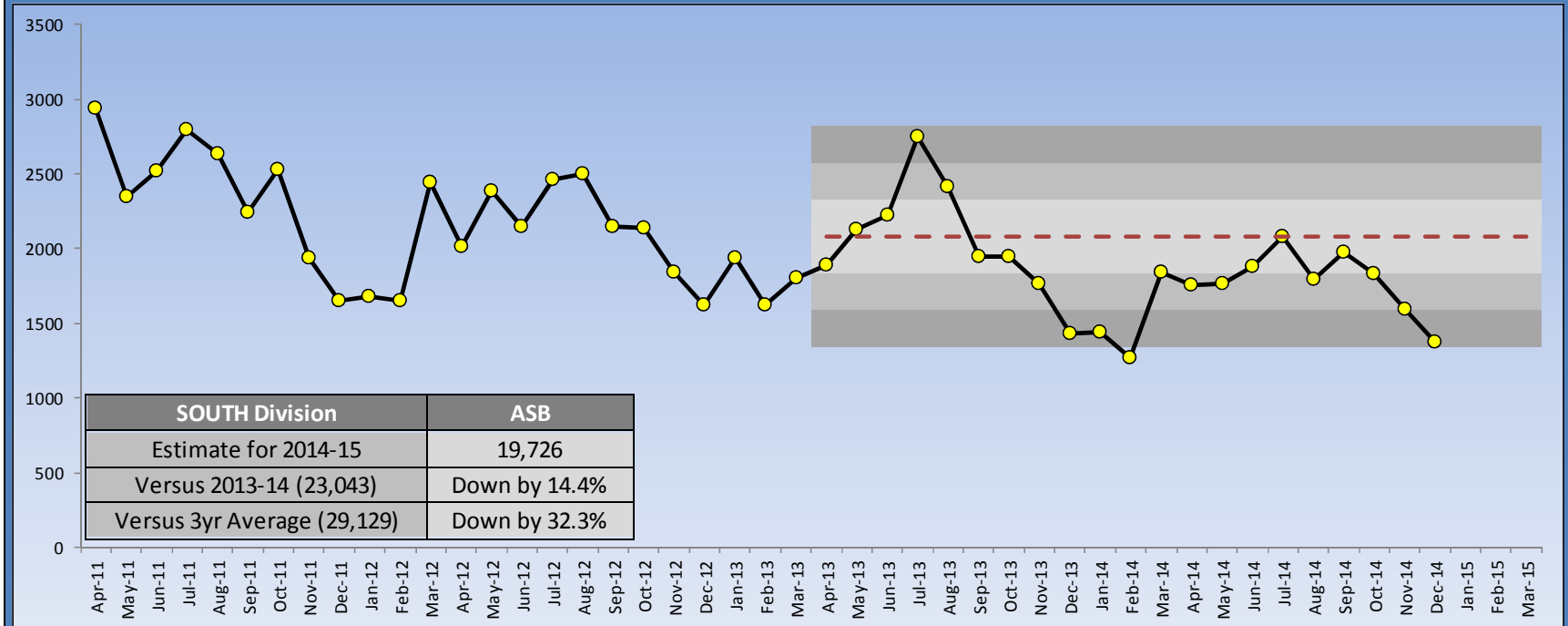
	Apr	May	Jun	Jul	Aug	Sep	Oct	Nov	Dec	Jan	Feb	Mar	Total	Diff	% Change
2011/2012	3,612	3,015	3,289	3,460	3,248	2,623	2,669	2,132	1,798	1,858	1,858	2,773	32,335		
2012/2013	2,386	2,555	2,582	2,899	3,030	2,500	2,507	2,288	1,834	1,855	1,895	2,023	28,354	-3,981	-12.3%
2013/2014	2,318	2,503	2,827	3,275	3,008	2,366	2,313	2,066	1,813	1,781	1,788	2,139	28,197	-157	-0.6%
2014/2015	2,368	2,529	2,626	2,852	2,512	2,500	2,213	2,015	1,710				21,325	-1,164	-5.2%

The dark red dashed line in the centre of the group of lines at the right-hand side of the chart represents the average monthly result for the last fiscal year. The grey bands define limits set at one, two and three standard deviations above and below the red average line (the standard deviation of the 36 monthly totals in the last three years). The difference and percentage change for 2014/2015 is against the same period in 2013/2014 i.e. a Year to Date comparison.

Anti-Social Behaviour Incidents SOUTH Division

SELECT AREA SOUTH Division
SELECT CLASS Anti Social Behaviour
SELECT GRADE All Grades

Click on the drop-down arrows on the right-hand edges of the combo boxes and choose from the lists that appear



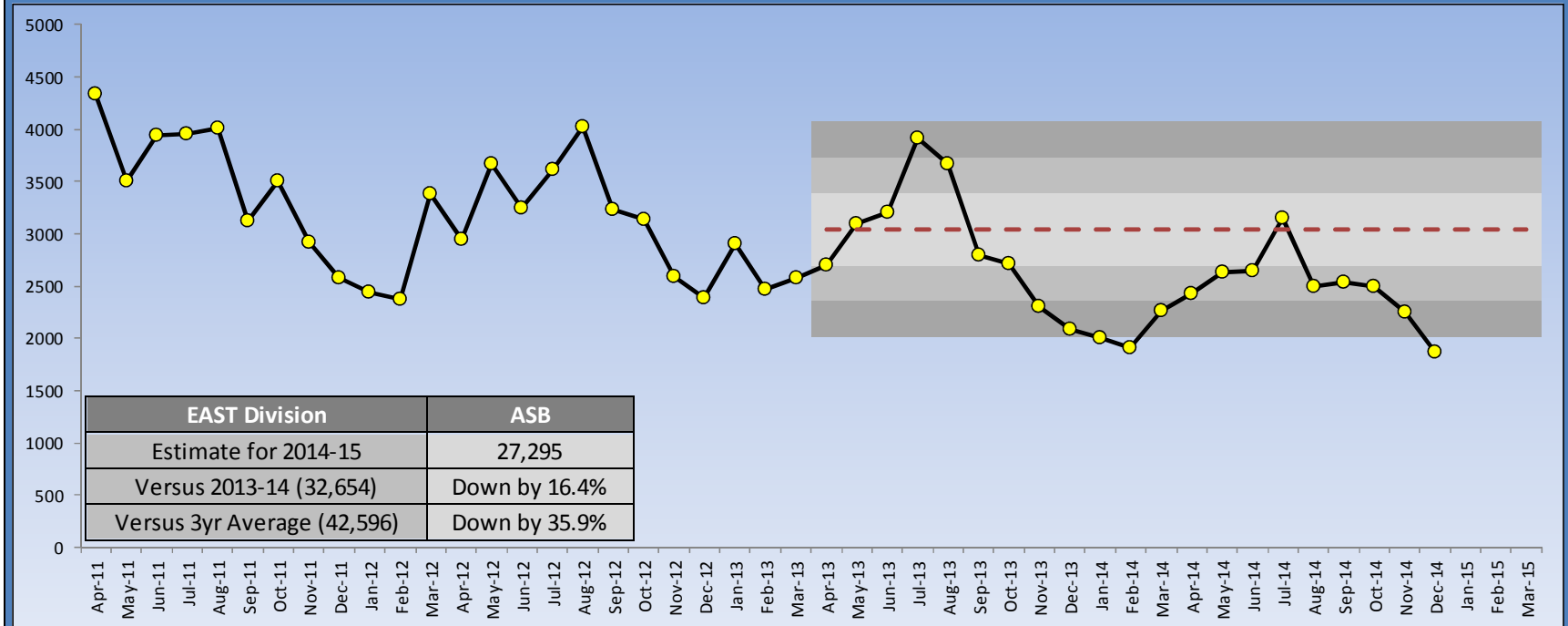
	Apr	May	Jun	Jul	Aug	Sep	Oct	Nov	Dec	Jan	Feb	Mar	Total	Diff	% Change
2011/2012	2,939	2,346	2,522	2,798	2,635	2,242	2,533	1,935	1,649	1,681	1,655	2,444	27,379		
2012/2013	2,014	2,386	2,143	2,459	2,499	2,145	2,136	1,841	1,623	1,933	1,626	1,807	24,612	-2,767	-10.1%
2013/2014	1,890	2,131	2,224	2,749	2,412	1,943	1,949	1,767	1,428	1,441	1,270	1,839	23,043	-1,569	-6.4%
2014/2015	1,760	1,768	1,882	2,080	1,792	1,971	1,830	1,596	1,374				16,053	-2,440	-13.2%

The dark red dashed line in the centre of the group of lines at the right-hand side of the chart represents the average monthly result for the last fiscal year. The grey bands define limits set at one, two and three standard deviations above and below the red average line (the standard deviation of the 36 monthly totals in the last three years). The difference and percentage change for 2014/2015 is against the same period in 2013/2014 i.e. a Year to Date comparison.

Anti-Social Behaviour Incidents EAST Division

SELECT AREA EAST Division
SELECT CLASS Anti Social Behaviour
SELECT GRADE All Grades

Click on the drop-down arrows on the right-hand edges of the combo boxes and choose from the lists that appear



	Apr	May	Jun	Jul	Aug	Sep	Oct	Nov	Dec	Jan	Feb	Mar	Total	Diff	% Change
2011/2012	4,337	3,510	3,938	3,953	4,007	3,128	3,507	2,912	2,575	2,434	2,379	3,386	40,066		
2012/2013	2,947	3,673	3,239	3,616	4,017	3,227	3,135	2,589	2,385	2,907	2,465	2,574	36,774	-3,292	-8.2%
2013/2014	2,704	3,097	3,202	3,915	3,667	2,794	2,715	2,301	2,087	2,008	1,906	2,258	32,654	-4,120	-11.2%
2014/2015	2,425	2,627	2,644	3,156	2,496	2,530	2,490	2,246	1,873				22,487	-3,995	-15.1%

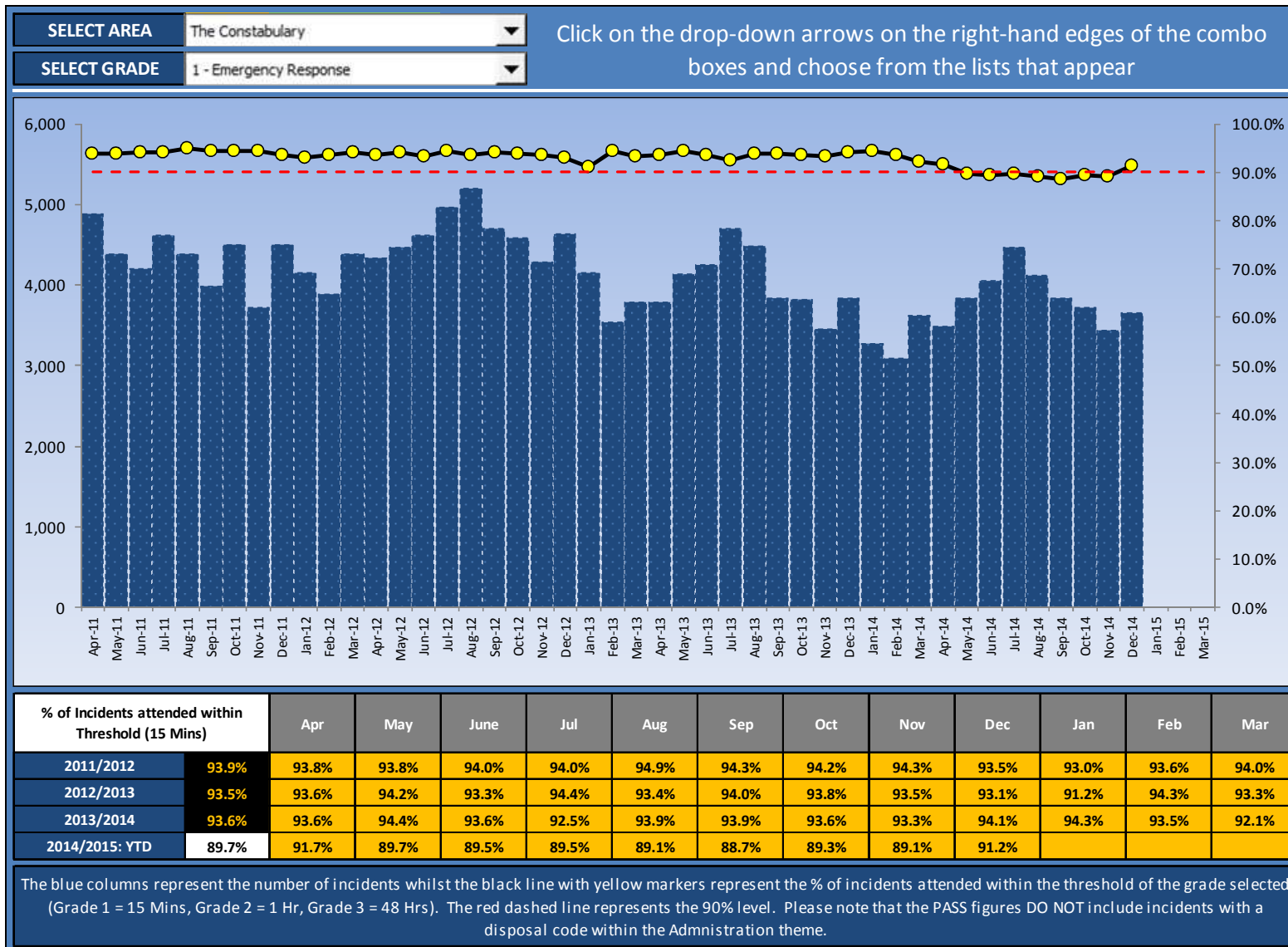
The dark red dashed line in the centre of the group of lines at the right-hand side of the chart represents the average monthly result for the last fiscal year. The grey bands define limits set at one, two and three standard deviations above and below the red average line (the standard deviation of the 36 monthly totals in the last three years). The difference and percentage change for 2014/2015 is against the same period in 2013/2014 i.e. a Year to Date comparison.

Grade 1 - Emergency Response – PASS The Constabulary

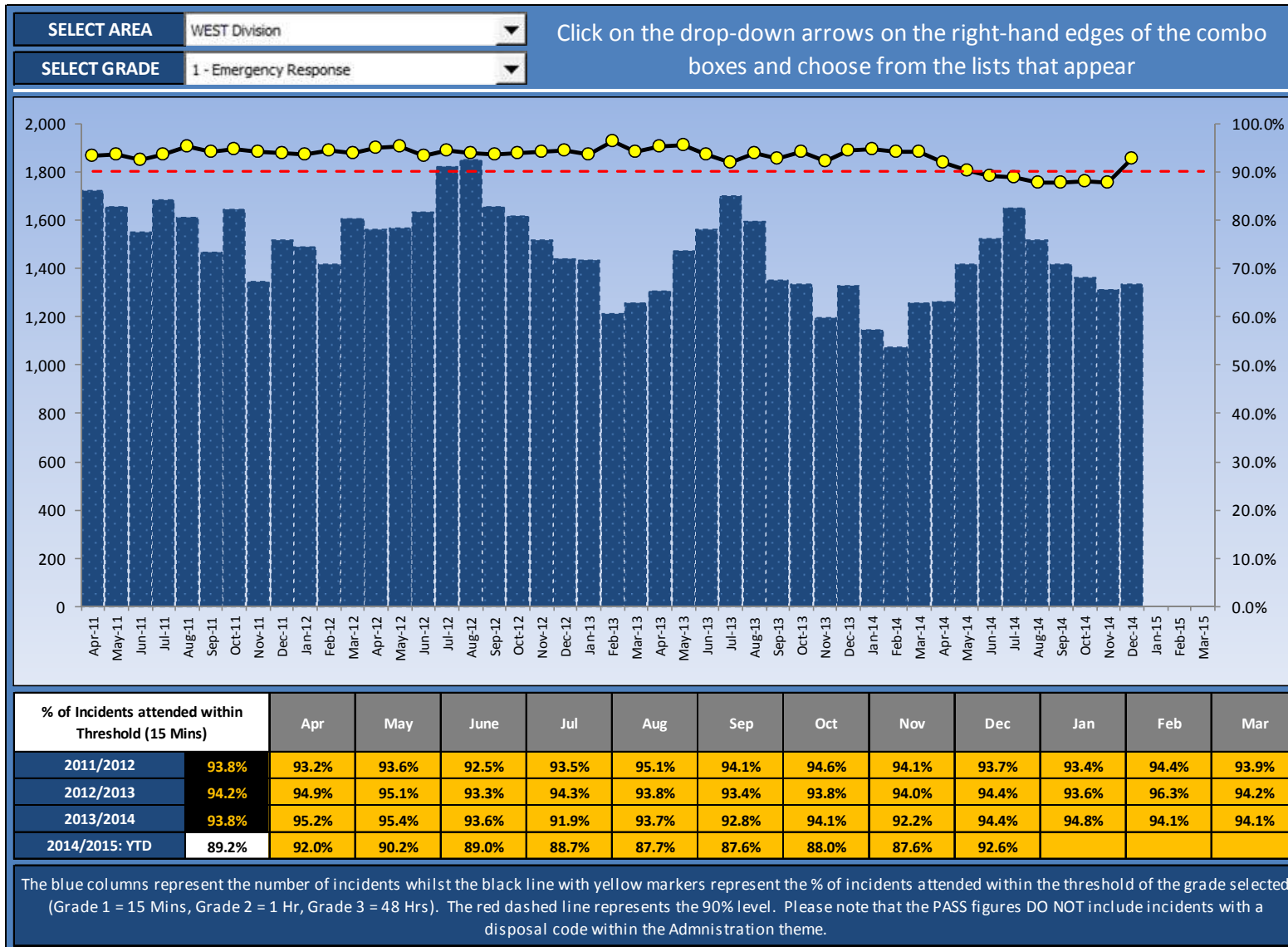


Lancashire Constabulary

police and communities together

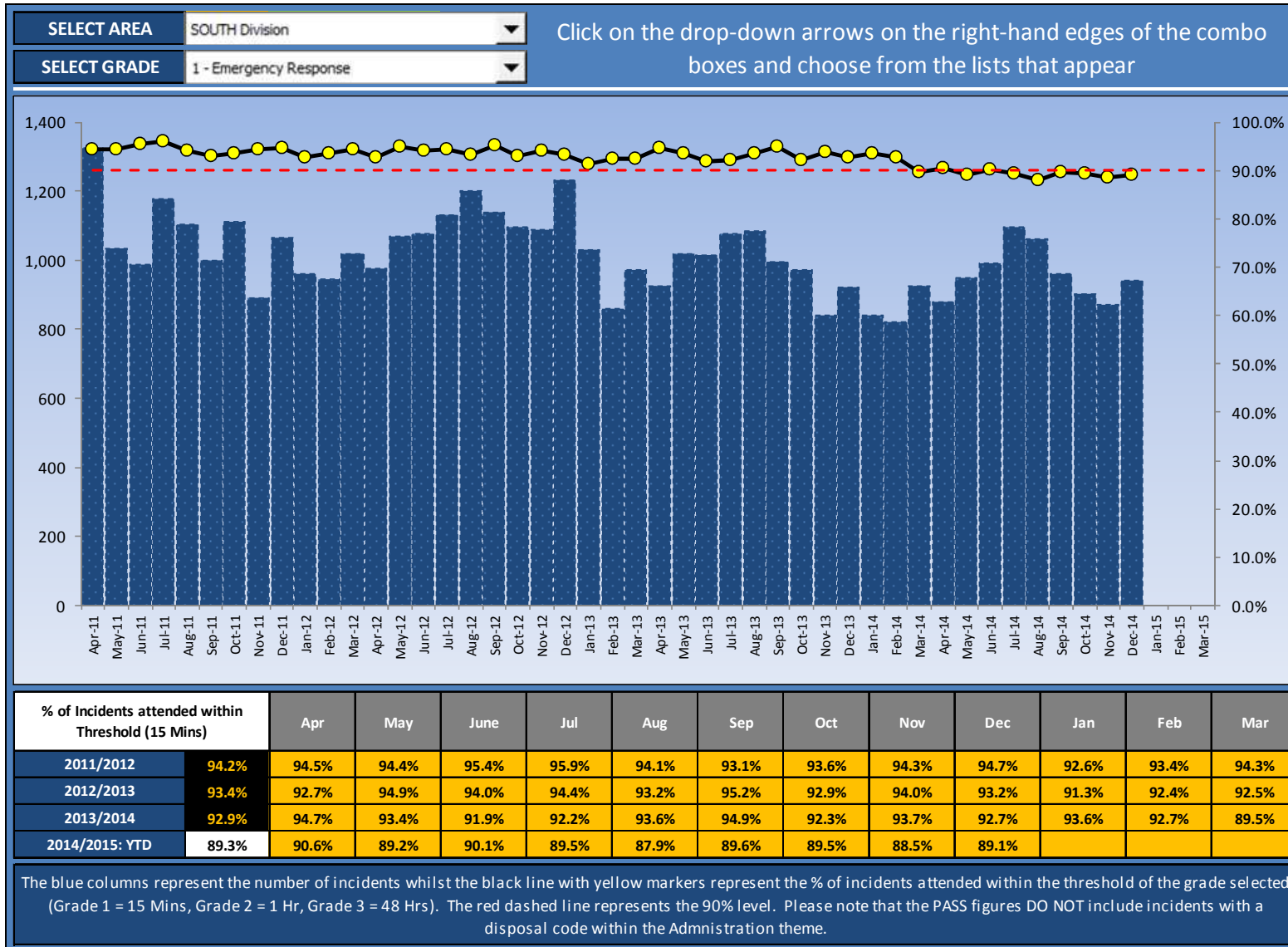


Grade 1 - Emergency Response – PASS WEST Division

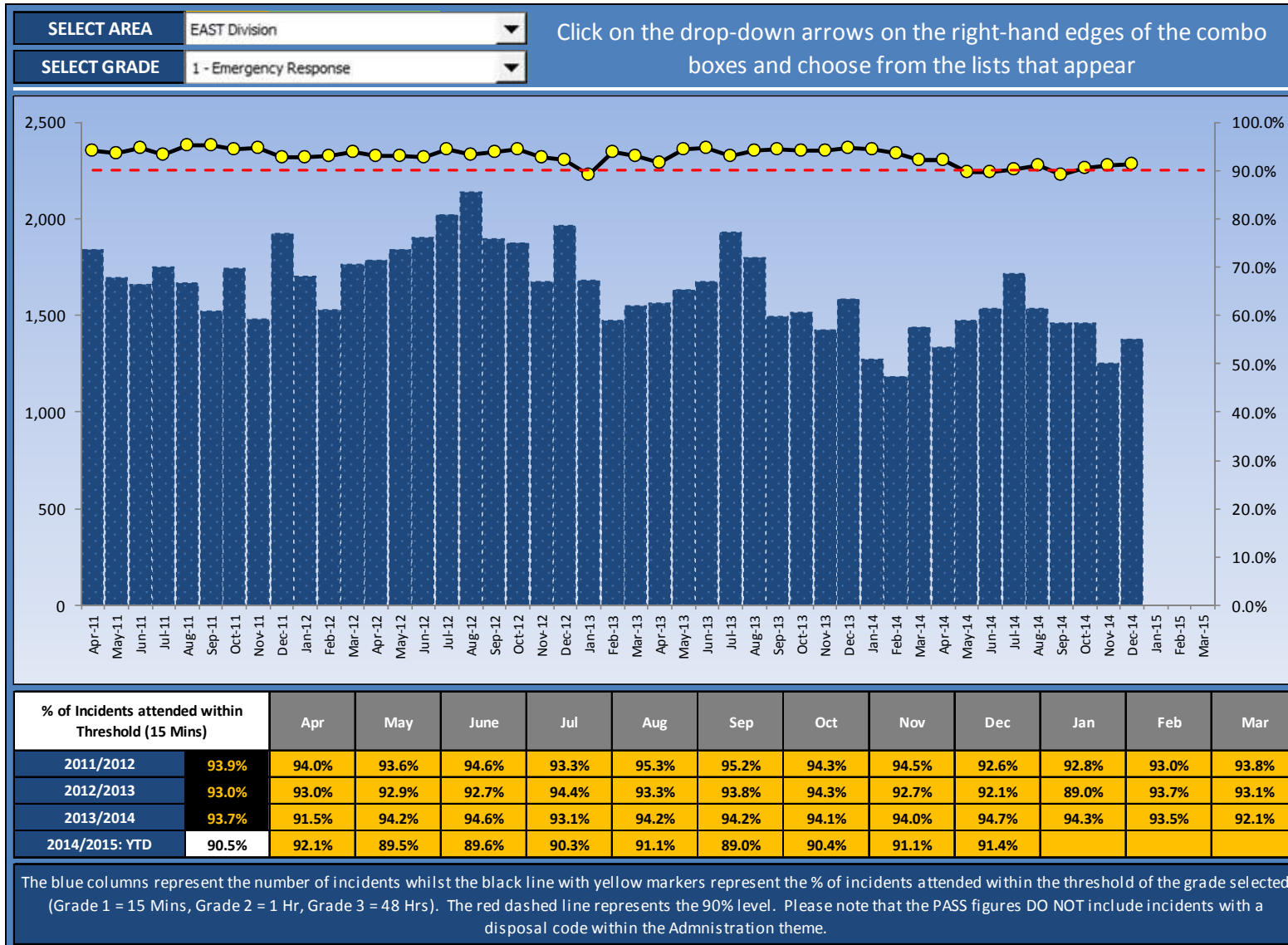


Grade 1 - Emergency Response – PASS

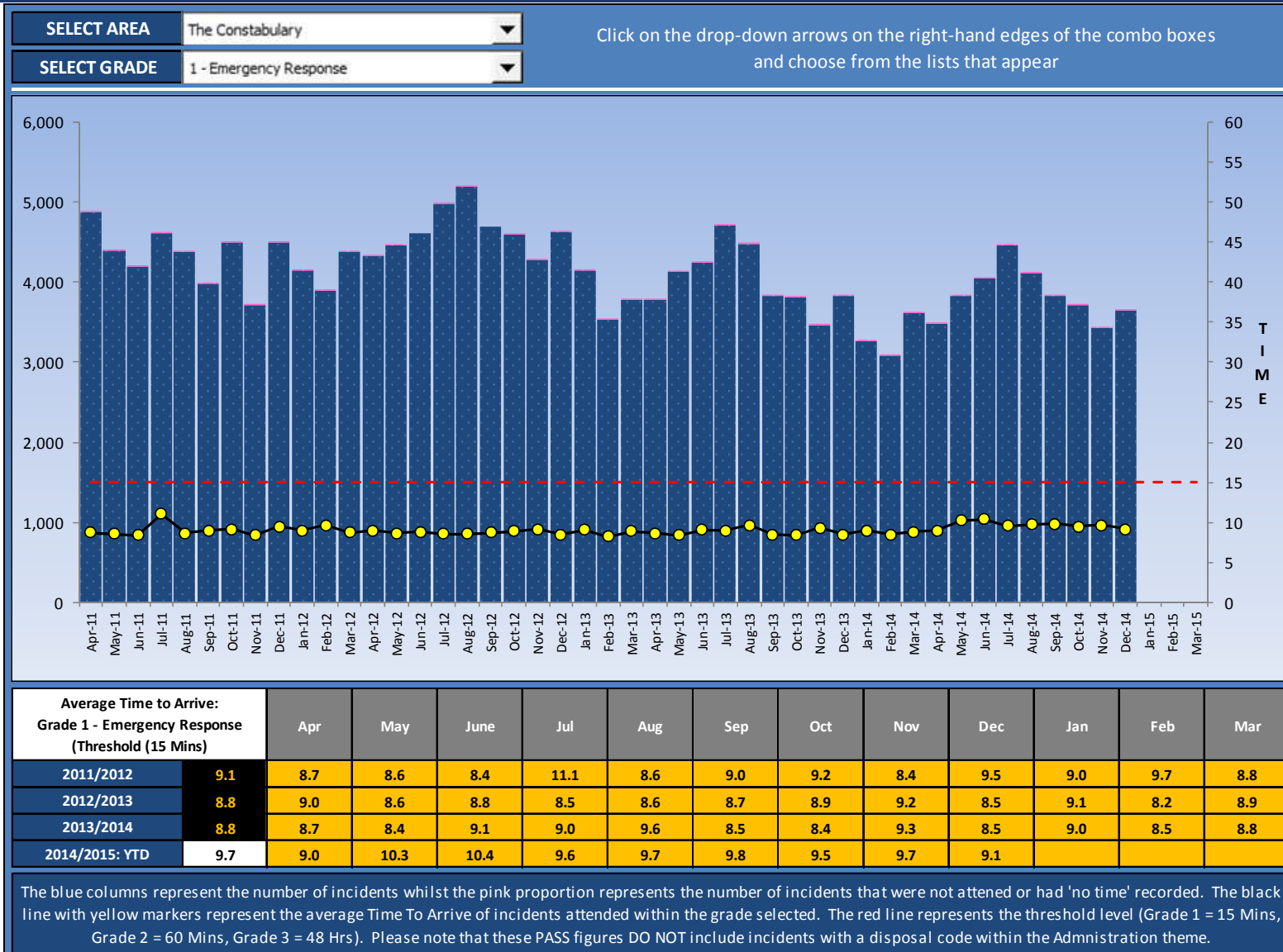
SOUTH Division



Grade 1 - Emergency Response – PASS EAST Division

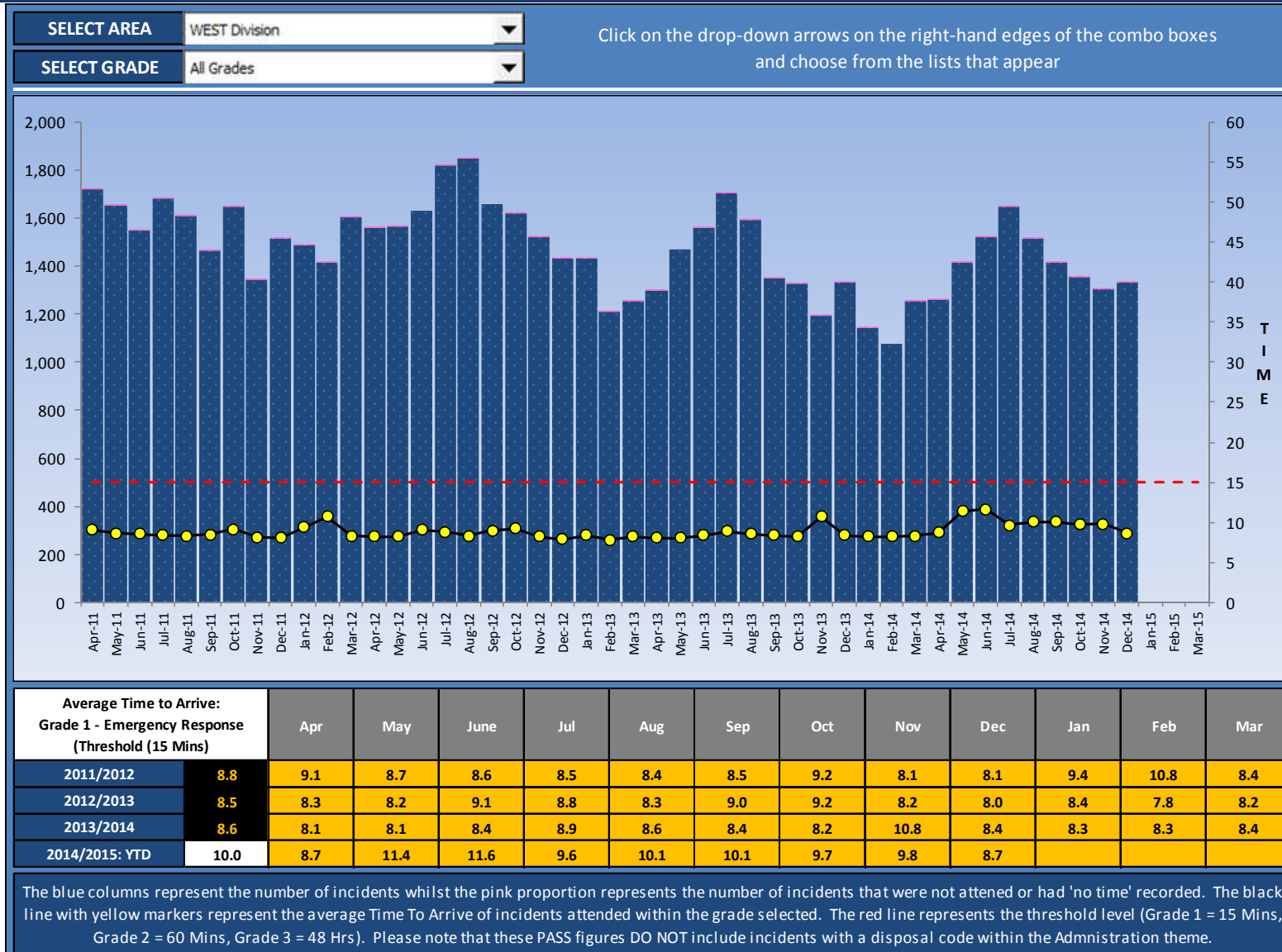


Grade 1 - Emergency Response – Time To Arrive The Constabulary



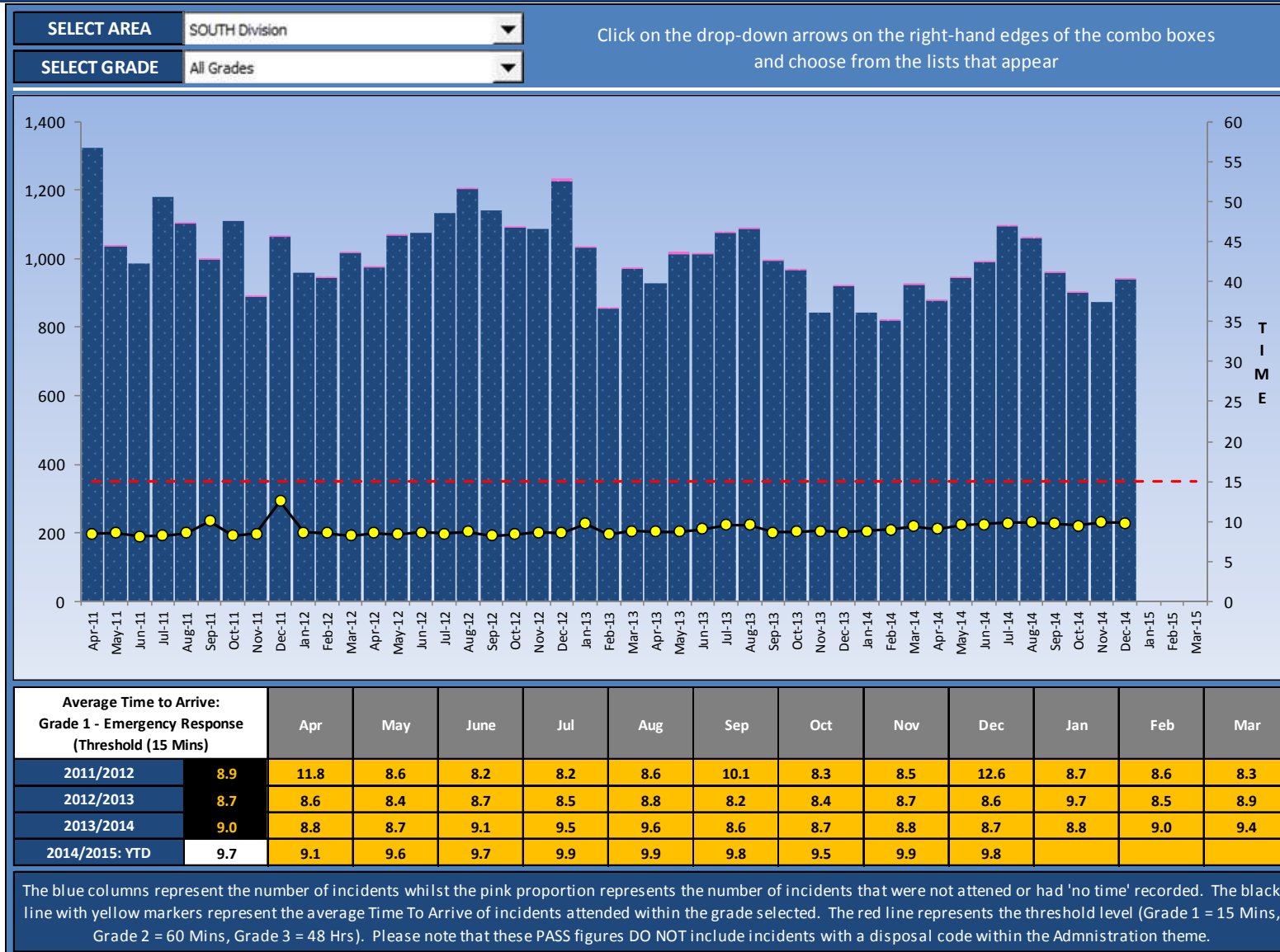
Grade 1 - Emergency Response – Time To Arrive

WEST Division

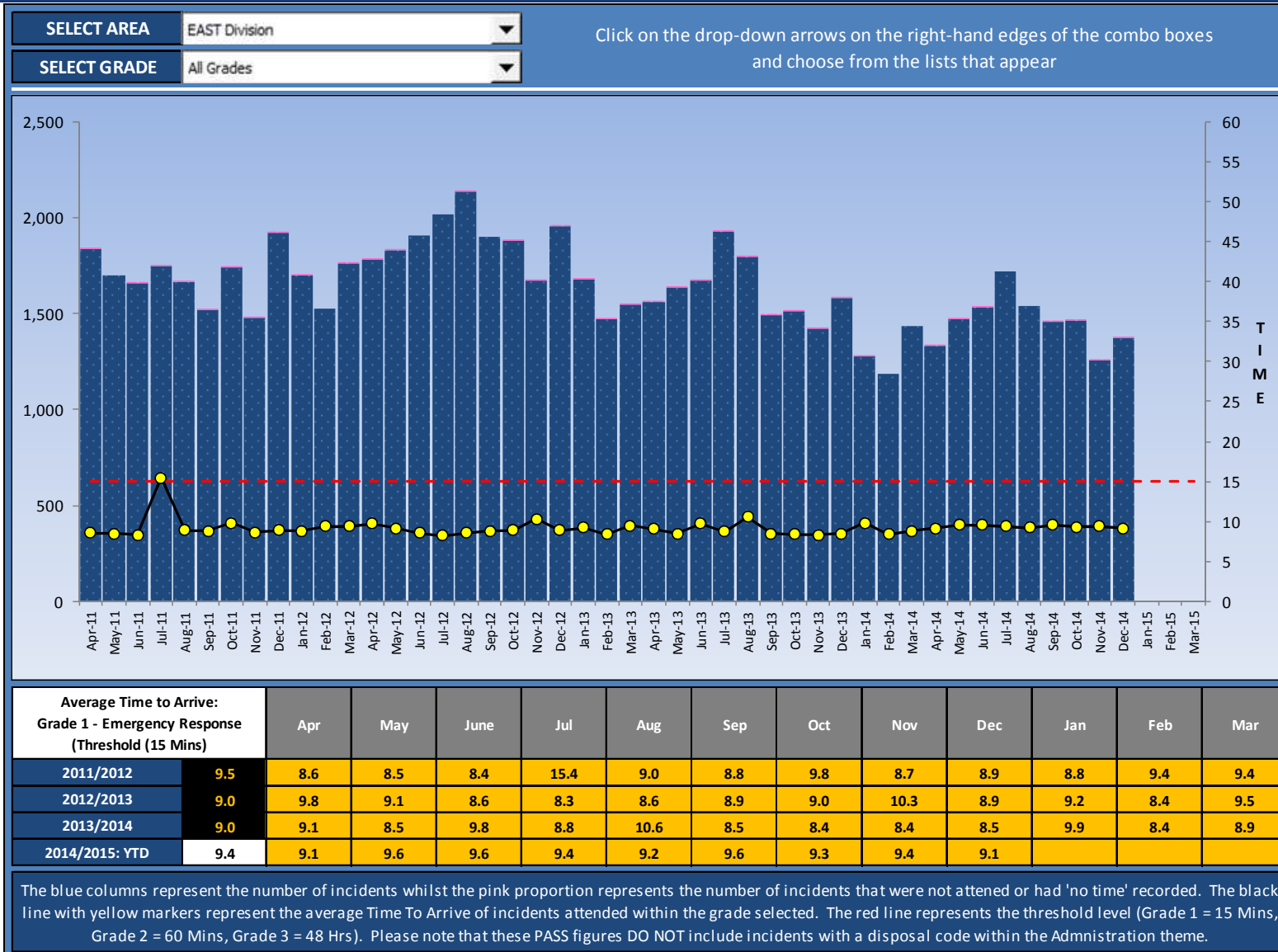


Grade 1 - Emergency Response – Time To Arrive

SOUTH Division



Grade 1 - Emergency Response – Time To Arrive EAST Division



Scrutiny Meeting

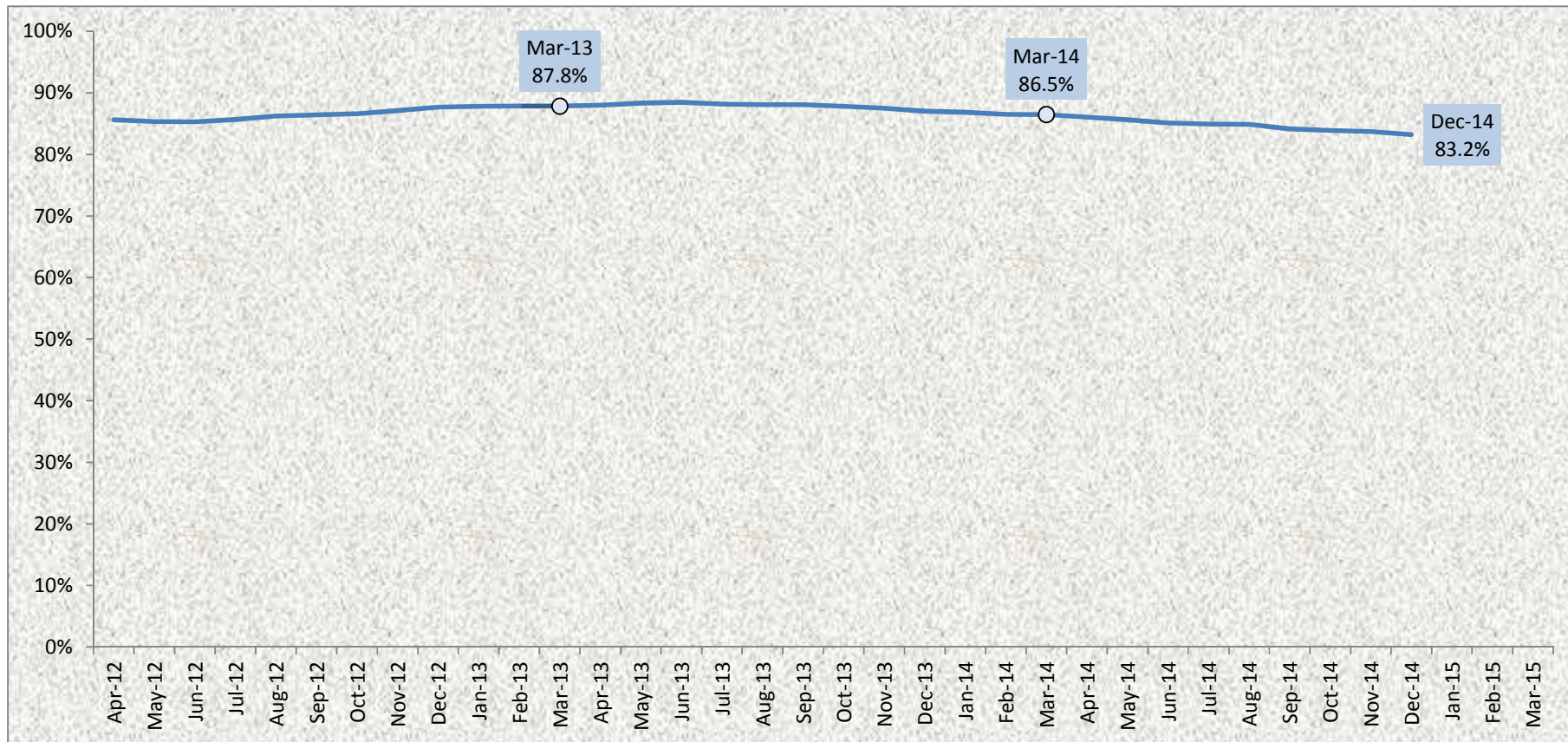
Satisfaction & Confidence

The Constabulary - User Satisfaction (Home Office) Twelve-Month Rolling Result Apr-12 to Dec-14

User Group: Four Groups (Burglary, Vehicle Crime, Violent Crime, Collisions)

Aspect of Service: Whole Experience

Level: At Least Fairly Satisfied

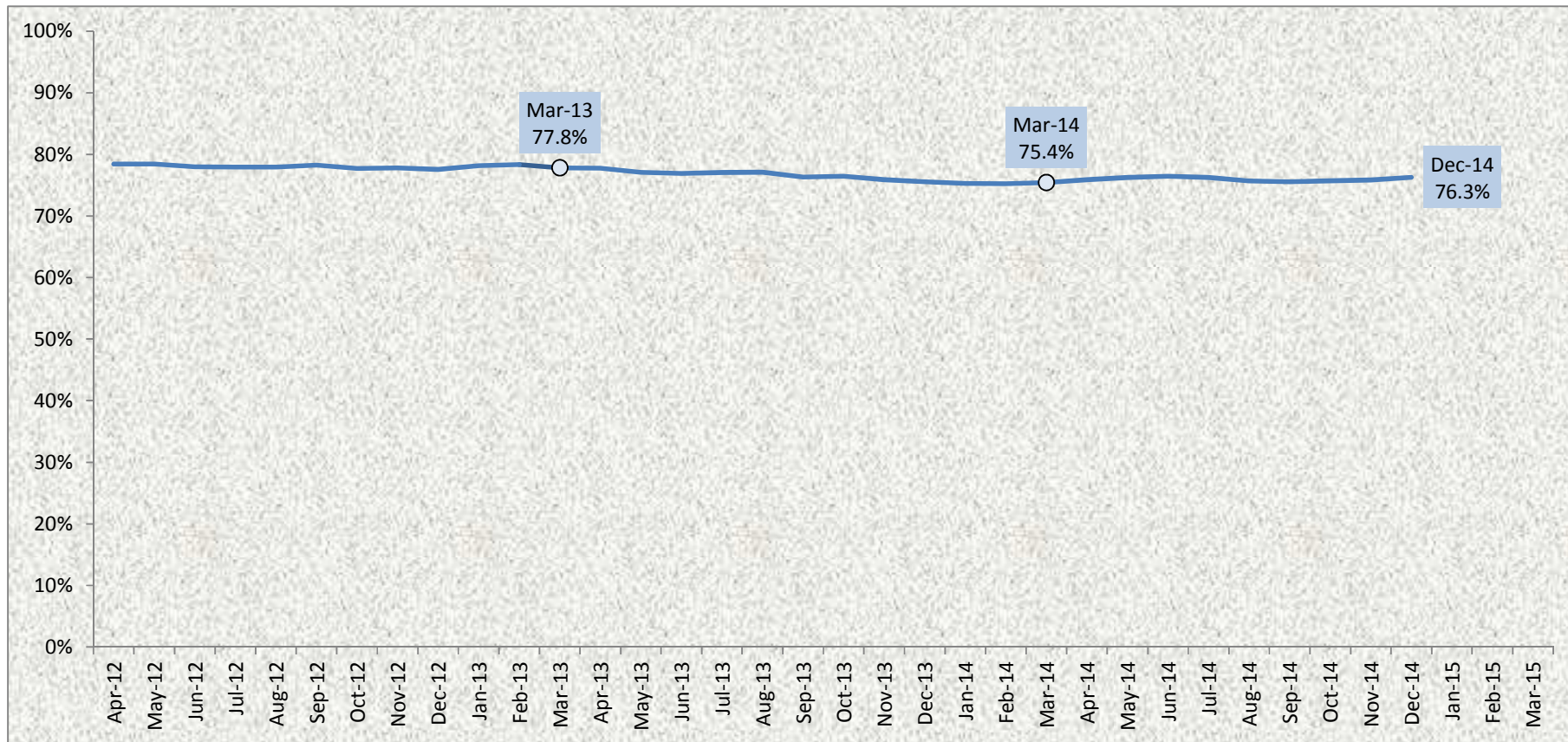


The Constabulary - User Satisfaction (ASB) Twelve-Month Rolling Result Apr-12 to Dec-14

User Group: Anti-Social Behaviour

Aspect of Service: Whole Experience

Level: At Least Fairly Satisfied



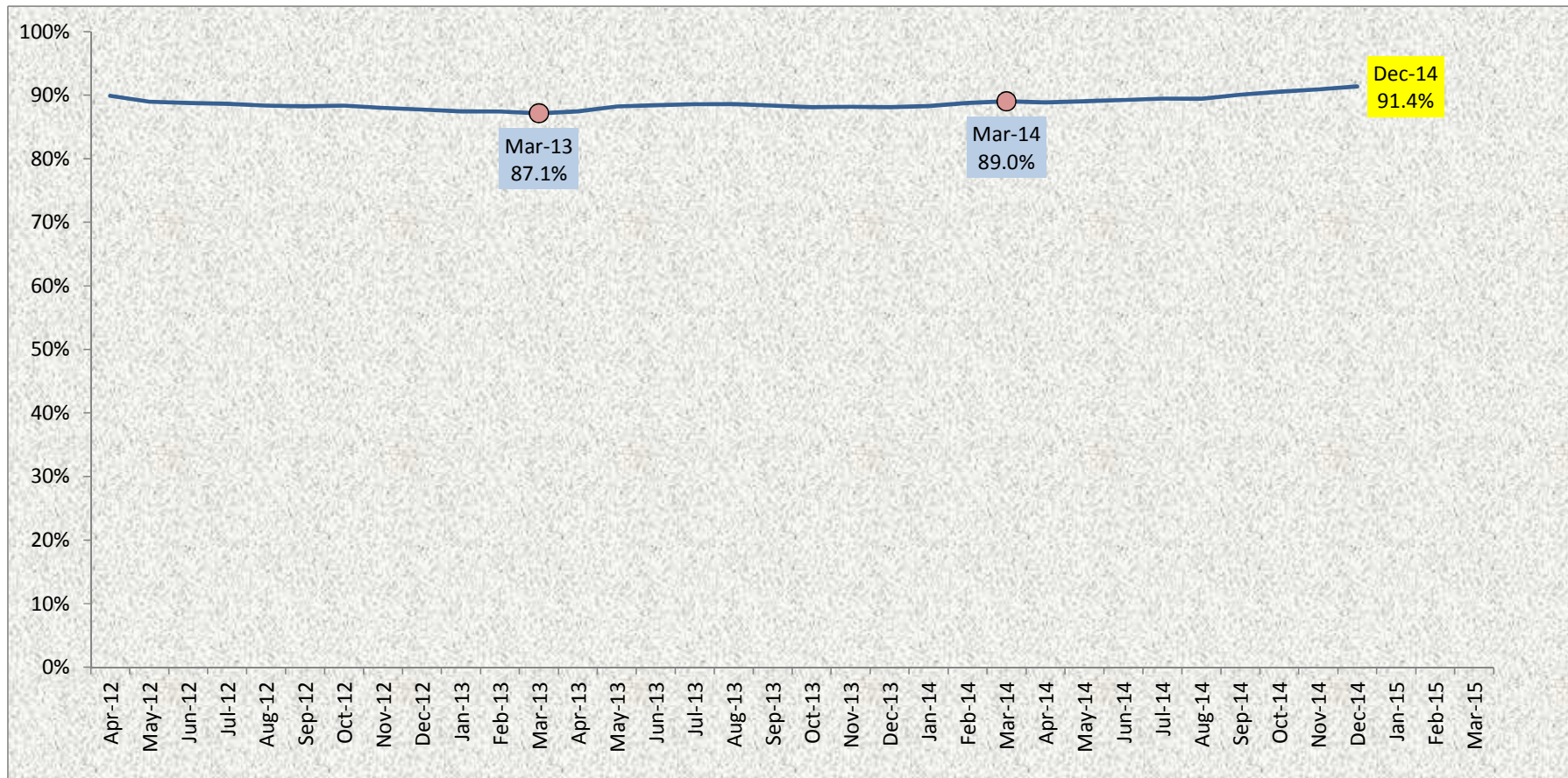
The Constabulary – Overall Confidence

Twelve-Month Rolling Result Apr-12 to Dec-14

User Group: Randomly Selected

Aspect of Service: Confidence in the Constabulary as a Whole

Level: At Least Fairly Confident



Scrutiny Meeting

Monday 12th January 2015