



# *Strategic Scrutiny Meeting*

## *23<sup>rd</sup> September 2015*

***Recorded Crime***

***Region and Most Similar Group***

***12m to Jul-15 -v- 12m to Jul-14***

# All Recorded Crime

## The Constabulary, Region and Most Similar Group



Areas	Earlier Period Aug-13 to Jul-14	Later Period Aug-14 to Jul-15	Change	
			Numeric	Percentage
<b>England &amp; Wales</b>	<b>3,457,749</b>	<b>3,644,139</b>	<b>+ 186,390</b>	<b>+ 5.4%</b>
<b>North West Region</b>	<b>453,414</b>	<b>483,812</b>	<b>+ 30,398</b>	<b>+ 6.7%</b>
Cheshire	54,365	52,915	- 1,450	- 2.7%
Cumbria	23,390	25,891	+ 2,501	+ 10.7%
Greater Manchester	186,743	211,945	+ 25,202	+ 13.5%
Lancashire	94,838	92,090	- 2,748	- 2.9%
Merseyside	94,078	100,971	+ 6,893	+ 7.3%
<b>Most Similar Group</b>	<b>743,913</b>	<b>777,662</b>	<b>+ 33,749</b>	<b>+ 4.5%</b>
Lancashire	94,838	92,090	- 2,748	- 2.9%
South Wales	85,234	89,812	+ 4,578	+ 5.4%
South Yorkshire	93,143	95,859	+ 2,716	+ 2.9%
Northumbria	68,664	77,240	+ 8,576	+ 12.5%
Nottinghamshire	69,077	73,987	+ 4,910	+ 7.1%
Humberside	65,896	66,221	+ 325	+ 0.5%
Kent	112,541	108,913	- 3,628	- 3.2%
West Yorkshire	154,520	173,540	+ 19,020	+ 12.3%
<b>Number of forces in England &amp; Wales with an increase in this category</b>			<b>36</b>	

# Victim Based Crime

## The Constabulary, Region and Most Similar Group



Areas	Earlier Period Aug-13 to Jul-14	Later Period Aug-14 to Jul-15	Change	
			Numeric	Percentage
<b>England &amp; Wales</b>	<b>3,070,007</b>	<b>3,240,922</b>	<b>+ 170,915</b>	<b>+ 5.6%</b>
<b>North West Region</b>	<b>403,094</b>	<b>431,082</b>	<b>+ 27,988</b>	<b>+ 6.9%</b>
Cheshire	48,359	46,517	- 1,842	- 3.8%
Cumbria	20,169	22,247	+ 2,078	+ 10.3%
Greater Manchester	168,528	190,094	+ 21,566	+ 12.8%
Lancashire	87,277	85,407	- 1,870	- 2.1%
Merseyside	78,761	86,817	+ 8,056	+ 10.2%
<b>Most Similar Group</b>	<b>673,978</b>	<b>706,728</b>	<b>+ 32,750</b>	<b>+ 4.9%</b>
Lancashire	87,277	85,407	- 1,870	- 2.1%
South Wales	74,490	77,636	+ 3,146	+ 4.2%
South Yorkshire	85,417	87,735	+ 2,318	+ 2.7%
Northumbria	59,877	69,069	+ 9,192	+ 15.4%
Nottinghamshire	62,028	66,494	+ 4,466	+ 7.2%
Humberside	59,903	60,812	+ 909	+ 1.5%
Kent	103,655	101,656	- 1,999	- 1.9%
West Yorkshire	141,331	157,919	+ 16,588	+ 11.7%
Number of forces in England & Wales with an increase in this category			<b>36</b>	

# High Impact Acquisitive Crime

## The Constabulary, Region and Most Similar Group



**Lancashire Constabulary**

police and communities together

Areas	Earlier Period Aug-13 to Jul-14	Later Period Aug-14 to Jul-15	Change	
			Numeric	Percentage
<b>England &amp; Wales</b>	<b>255,650</b>	<b>240,017</b>	<b>- 15,633</b>	<b>- 6.1%</b>
<b>North West Region</b>	<b>35,554</b>	<b>34,770</b>	<b>- 784</b>	<b>- 2.2%</b>
Cheshire	2,909	2,540	- 369	- 12.7%
Cumbria	703	784	+ 81	+ 11.5%
Greater Manchester	19,269	18,631	- 638	- 3.3%
Lancashire	5,370	5,426	+ 56	+ 1.0%
Merseyside	7,303	7,389	+ 86	+ 1.2%
<b>Most Similar Group</b>	<b>50,021</b>	<b>48,722</b>	<b>- 1,299</b>	<b>- 2.6%</b>
Lancashire	5,370	5,426	+ 56	+ 1.0%
South Wales	4,081	3,842	- 239	- 5.9%
South Yorkshire	8,343	7,410	- 933	- 11.2%
Northumbria	3,150	3,637	+ 487	+ 15.5%
Nottinghamshire	5,311	4,636	- 675	- 12.7%
Humberside	4,579	4,347	- 232	- 5.1%
Kent	6,932	5,854	- 1,078	- 15.6%
West Yorkshire	12,255	13,570	+ 1,315	+ 10.7%
<b>Number of forces in England &amp; Wales with an increase in this category</b>			<b>16</b>	

# Violence Against The Person

## The Constabulary, Region and Most Similar Group



**Lancashire Constabulary**

police and communities together

Areas	Earlier Period Aug-13 to Jul-14	Later Period Aug-14 to Jul-15	Change	
			Numeric	Percentage
<b>England &amp; Wales</b>	<b>671,104</b>	<b>842,126</b>	<b>+ 171,022</b>	<b>+ 25.5%</b>
<b>North West Region</b>	<b>84,027</b>	<b>108,101</b>	<b>+ 24,074</b>	<b>+ 28.7%</b>
Cheshire	10,487	12,309	+ 1,822	+ 17.4%
Cumbria	5,605	6,922	+ 1,317	+ 23.5%
Greater Manchester	33,317	45,782	+ 12,465	+ 37.4%
Lancashire	20,587	22,023	+ 1,436	+ 7.0%
Merseyside	14,031	21,065	+ 7,034	+ 50.1%
<b>Most Similar Group</b>	<b>140,740</b>	<b>172,610</b>	<b>+ 31,870</b>	<b>+ 22.6%</b>
Lancashire	20,587	22,023	+ 1,436	+ 7.0%
South Wales	17,181	21,507	+ 4,326	+ 25.2%
South Yorkshire	13,728	17,104	+ 3,376	+ 24.6%
Northumbria	11,076	14,548	+ 3,472	+ 31.3%
Nottinghamshire	14,352	17,577	+ 3,225	+ 22.5%
Humberside	12,744	14,299	+ 1,555	+ 12.2%
Kent	28,069	29,673	+ 1,604	+ 5.7%
West Yorkshire	23,003	35,879	+ 12,876	+ 56.0%
Number of forces in England & Wales with an increase in this category			<b>42</b>	

# All Sexual Offences

## The Constabulary, Region and Most Similar Group



**Lancashire Constabulary**

police and communities together

Areas	Earlier Period Aug-13 to Jul-14	Later Period Aug-14 to Jul-15	Change	
			Numeric	Percentage
<b>England &amp; Wales</b>	<b>68,606</b>	<b>96,253</b>	<b>+ 27,647</b>	<b>+ 40.3%</b>
<b>North West Region</b>	<b>8,541</b>	<b>11,940</b>	<b>+ 3,399</b>	<b>+ 39.8%</b>
Cheshire	1,014	1,277	+ 263	+ 25.9%
Cumbria	516	767	+ 251	+ 48.6%
Greater Manchester	3,646	5,473	+ 1,827	+ 50.1%
Lancashire	1,834	2,240	+ 406	+ 22.1%
Merseyside	1,531	2,183	+ 652	+ 42.6%
<b>Most Similar Group</b>	<b>14,349</b>	<b>20,926</b>	<b>+ 6,577</b>	<b>+ 45.8%</b>
Lancashire	1,834	2,240	+ 406	+ 22.1%
South Wales	1,558	1,798	+ 240	+ 15.4%
South Yorkshire	1,690	2,776	+ 1,086	+ 64.3%
Northumbria	1,283	2,470	+ 1,187	+ 92.5%
Nottinghamshire	1,264	2,101	+ 837	+ 66.2%
Humberside	1,456	1,732	+ 276	+ 19.0%
Kent	2,436	2,829	+ 393	+ 16.1%
West Yorkshire	2,828	4,980	+ 2,152	+ 76.1%
Number of forces in England & Wales with an increase in this category			<b>42</b>	

# Racially/Religiously Aggravated Offences

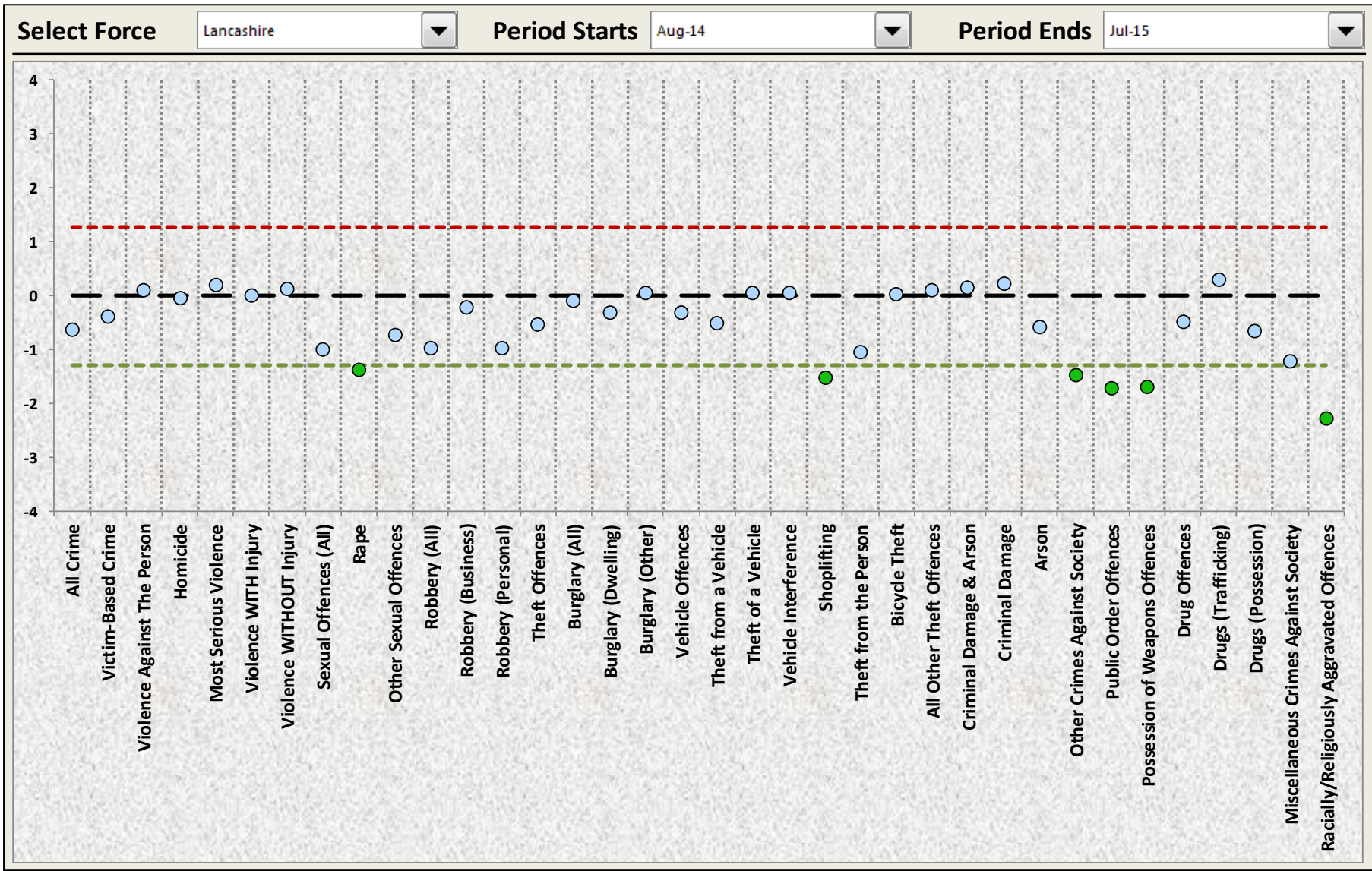
## The Constabulary, Region and Most Similar Group



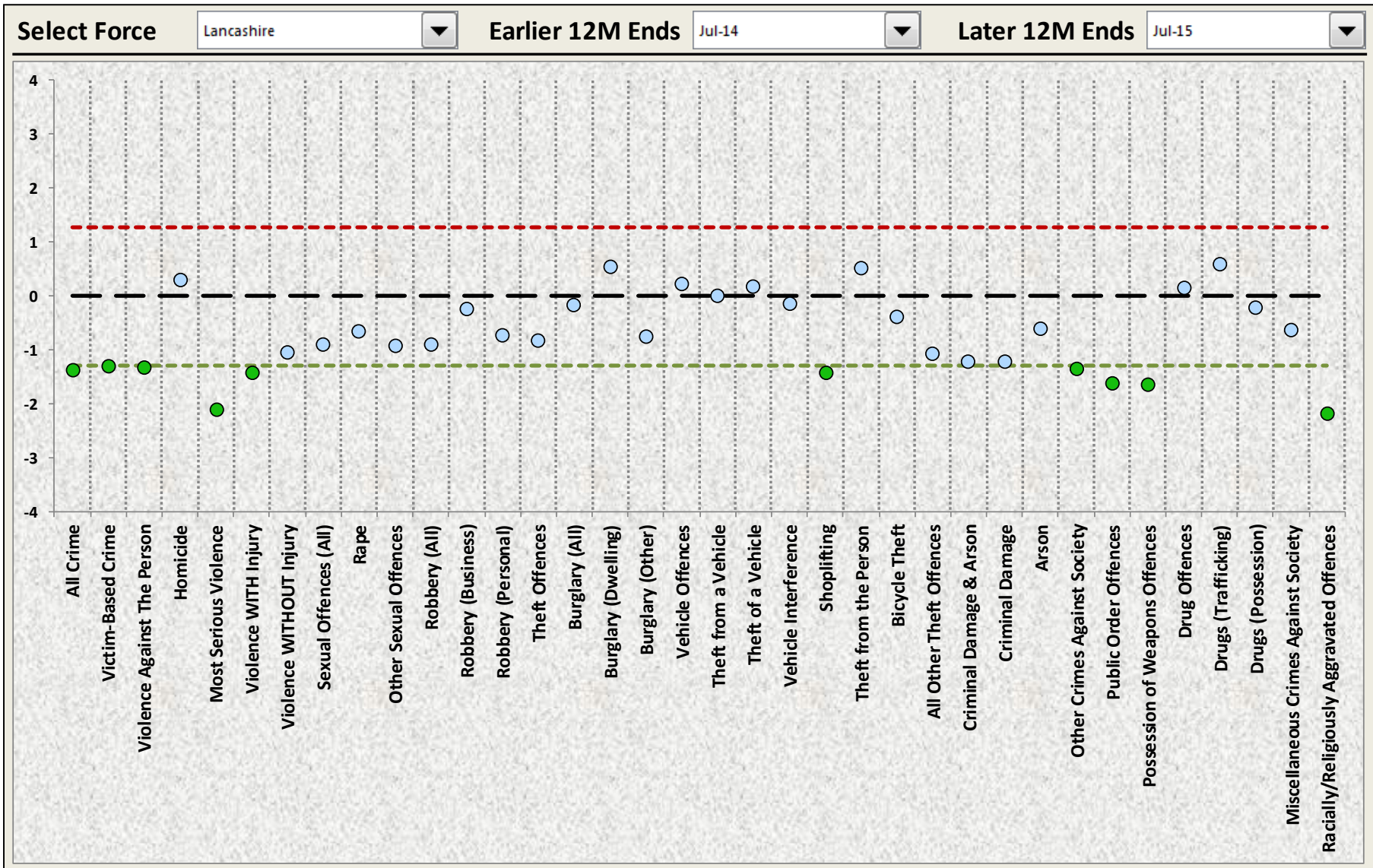
**Lancashire**  
Constabulary

police and communities together

Areas	Earlier Period Aug-13 to Jul-14	Later Period Aug-14 to Jul-15	Change	
			Numeric	Percentage
<b>England &amp; Wales</b>	<b>30,998</b>	<b>38,151</b>	<b>+ 7,153</b>	<b>+ 23.1%</b>
<b>North West Region</b>	<b>4,739</b>	<b>5,974</b>	<b>+ 1,235</b>	<b>+ 26.1%</b>
Cheshire	497	551	+ 54	+ 10.9%
Cumbria	154	192	+ 38	+ 24.7%
Greater Manchester	2,434	3,323	+ 889	+ 36.5%
Lancashire	504	392	- 112	- 22.2%
Merseyside	1,150	1,516	+ 366	+ 31.8%
<b>Most Similar Group</b>	<b>5,200</b>	<b>6,080</b>	<b>+ 880</b>	<b>+ 16.9%</b>
Lancashire	504	392	- 112	- 22.2%
South Wales	715	969	+ 254	+ 35.5%
South Yorkshire	495	566	+ 71	+ 14.3%
Northumbria	566	707	+ 141	+ 24.9%
Nottinghamshire	485	599	+ 114	+ 23.5%
Humberside	308	288	- 20	- 6.5%
Kent	714	627	- 87	- 12.2%
West Yorkshire	1,413	1,932	+ 519	+ 36.7%
Number of forces in England & Wales with an increase in this category			<b>33</b>	









# *Scrutiny Meeting*

***Recorded Crime***  
***Priority Crimes***

# All Recorded Crime The Constabulary and BCUs



**Lancashire Constabulary**

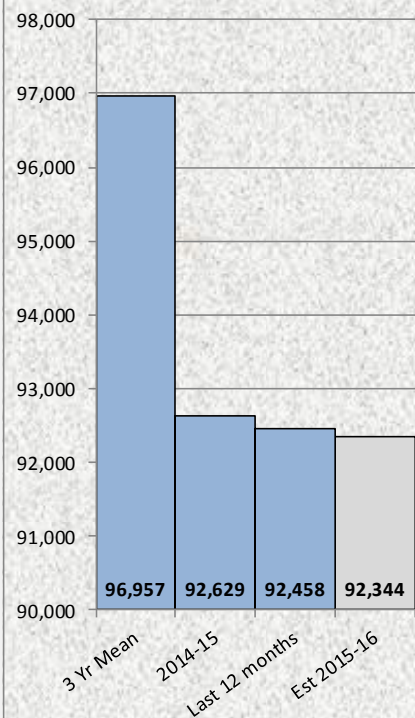
police and communities together

## CORA (V15) - Scrutiny Meeting Charts

Select Category

All Crime

### The Constabulary



The 2015-16 Year-End Estimate of  
**92,344**

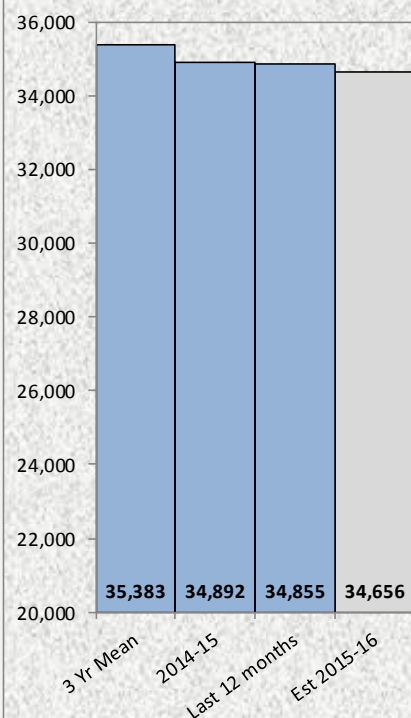
represents

a REDUCTION OF 0.3% on 2014-15

and

a REDUCTION OF 4.8% on the 3yr mean

### East Division



The 2015-16 Year-End Estimate of  
**34,656**

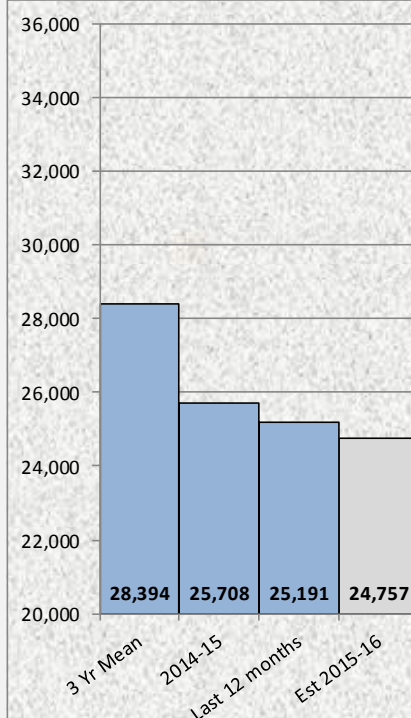
represents

a REDUCTION OF 0.7% on 2014-15

and

a REDUCTION OF 2.1% on the 3yr mean

### South Division



The 2015-16 Year-End Estimate of  
**24,757**

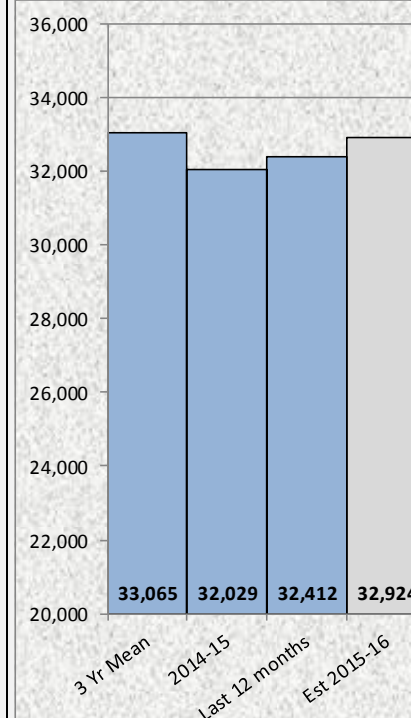
represents

a REDUCTION OF 3.7% on 2014-15

and

a REDUCTION OF 12.8% on the 3yr mean

### West Division



The 2015-16 Year-End Estimate of  
**32,924**

represents

an INCREASE OF 2.8% on 2014-15

and

a REDUCTION OF 0.4% on the 3yr mean

# Victim Based Crime

## The Constabulary and BCUs

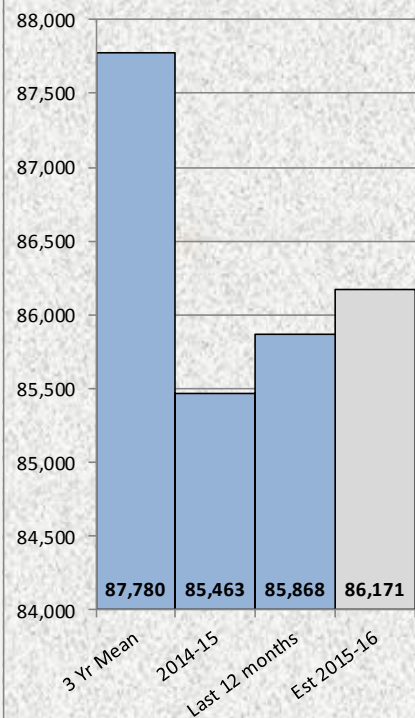


### CORA (V15) - Scrutiny Meeting Charts

Select Category

**Victim-Based Crime**

#### The Constabulary



The 2015-16 Year-End Estimate of **86,171**

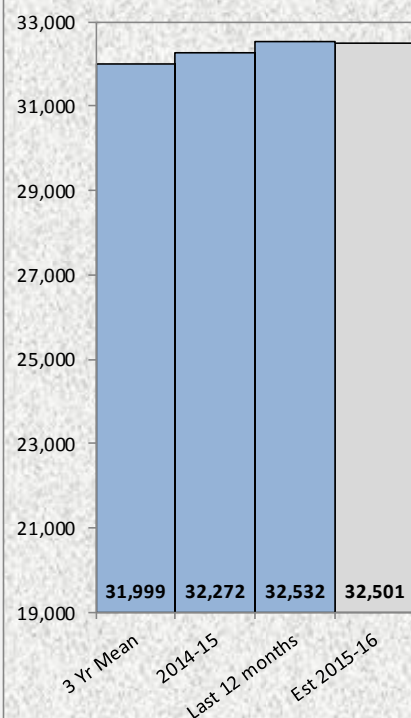
represents

an INCREASE OF 0.8% on 2014-15

and

a REDUCTION OF 1.8% on the 3yr mean

#### East Division



The 2015-16 Year-End Estimate of **32,501**

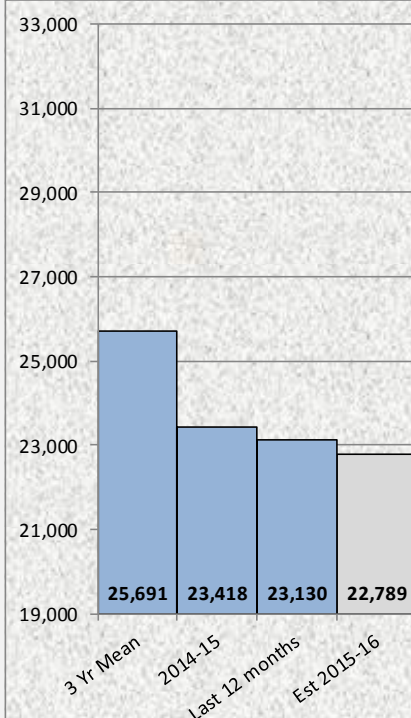
represents

an INCREASE OF 0.7% on 2014-15

and

an INCREASE OF 1.6% on the 3yr mean

#### South Division



The 2015-16 Year-End Estimate of **22,789**

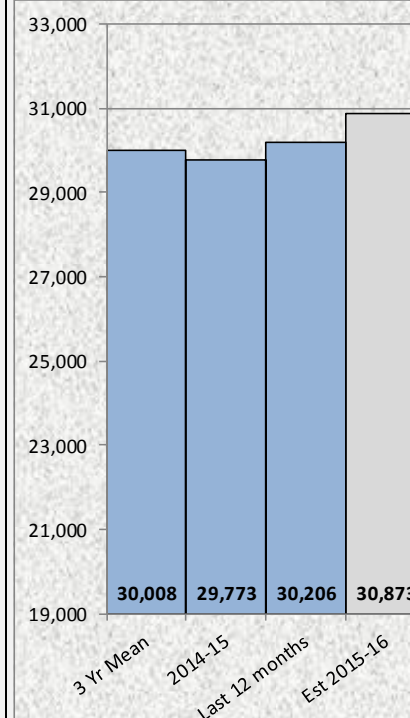
represents

a REDUCTION OF 2.7% on 2014-15

and

a REDUCTION OF 11.3% on the 3yr mean

#### West Division



The 2015-16 Year-End Estimate of **30,873**

represents

an INCREASE OF 3.7% on 2014-15

and

an INCREASE OF 2.9% on the 3yr mean

# High Impact Acquisitive Crime The Constabulary and BCUs

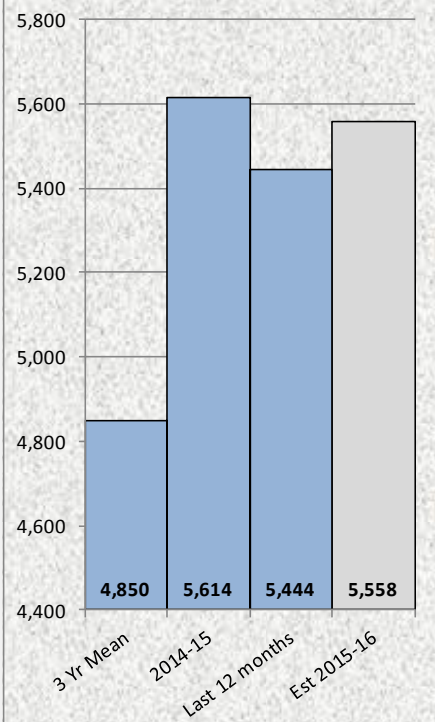


## CORA (V15) - Scrutiny Meeting Charts

Select Category

**High Impact Acquisitive Crime**

### The Constabulary



The 2015-16 Year-End Estimate of  
**5,558**

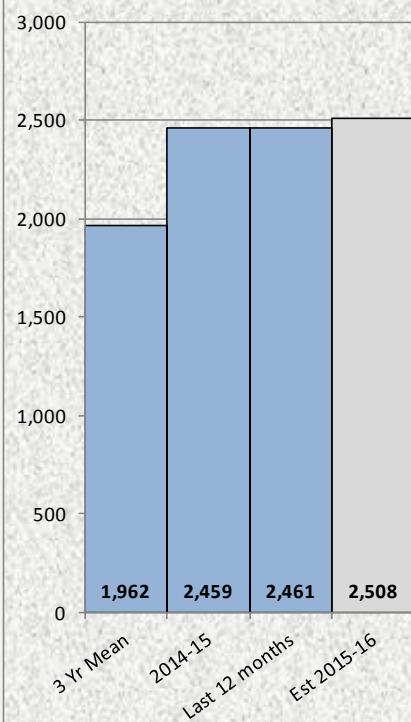
represents

a REDUCTION OF 1.0% on 2014-15

and

an INCREASE OF 14.6% on the 3yr mean

### East Division



The 2015-16 Year-End Estimate of  
**2,508**

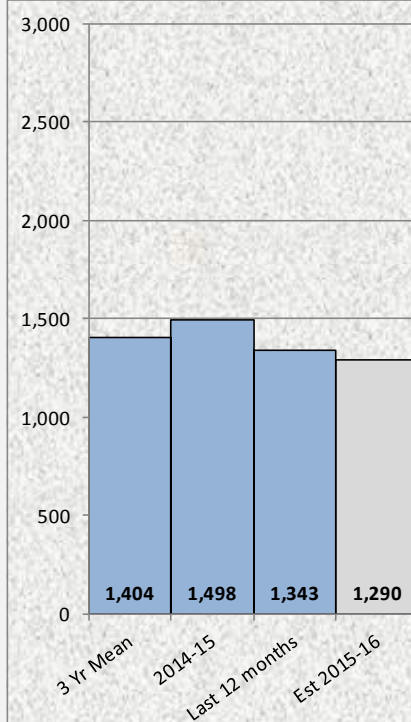
represents

an INCREASE OF 2.0% on 2014-15

and

an INCREASE OF 27.8% on the 3yr mean

### South Division



The 2015-16 Year-End Estimate of  
**1,290**

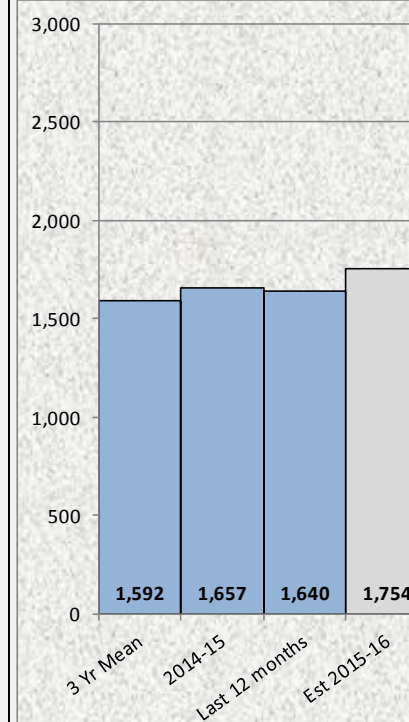
represents

a REDUCTION OF 13.9% on 2014-15

and

a REDUCTION OF 8.1% on the 3yr mean

### West Division



The 2015-16 Year-End Estimate of  
**1,754**

represents

an INCREASE OF 5.8% on 2014-15

and

an INCREASE OF 10.2% on the 3yr mean

# Burglary (Dwelling)

## The Constabulary and BCUs

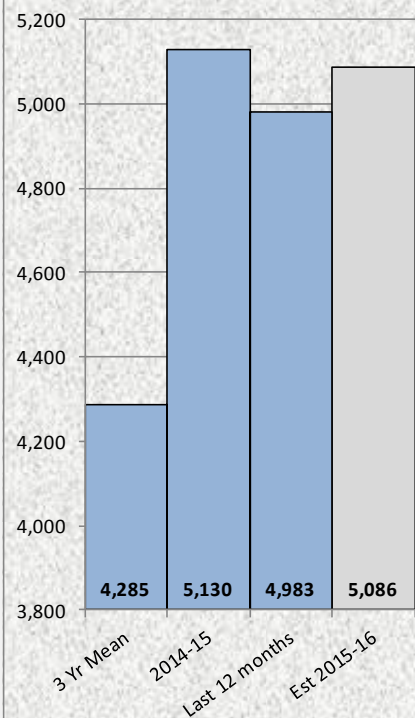


### CORA (V15) - Scrutiny Meeting Charts

Select Category

**Burglary (Dwelling)**

#### The Constabulary



The 2015-16 Year-End Estimate of  
**5,086**

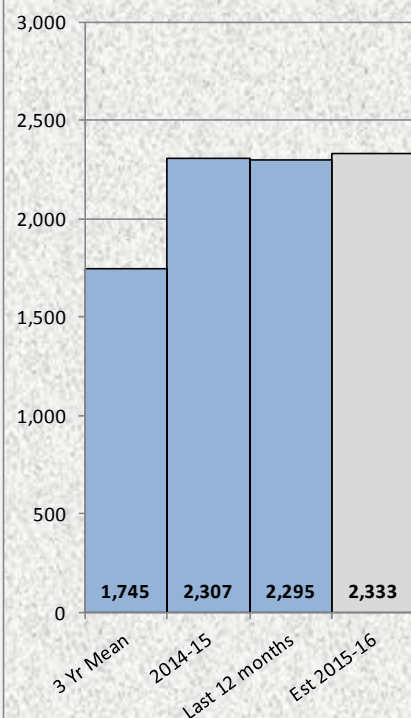
represents

a REDUCTION OF 0.9% on 2014-15

and

an INCREASE OF 18.7% on the 3yr mean

#### East Division



The 2015-16 Year-End Estimate of  
**2,333**

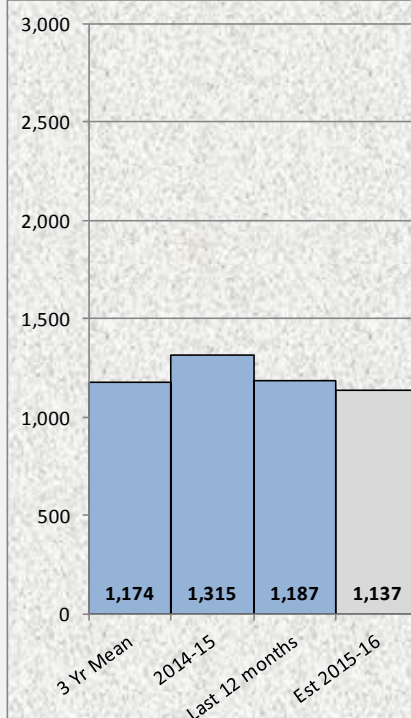
represents

an INCREASE OF 1.1% on 2014-15

and

an INCREASE OF 33.7% on the 3yr mean

#### South Division



The 2015-16 Year-End Estimate of  
**1,137**

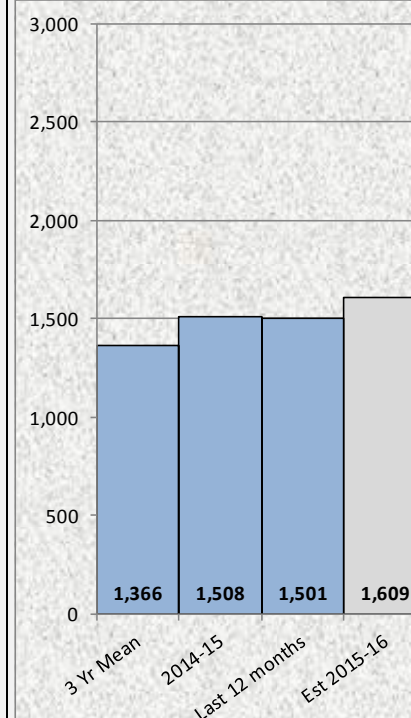
represents

a REDUCTION OF 13.5% on 2014-15

and

a REDUCTION OF 3.2% on the 3yr mean

#### West Division



The 2015-16 Year-End Estimate of  
**1,609**

represents

an INCREASE OF 6.7% on 2014-15

and

an INCREASE OF 17.8% on the 3yr mean

# Robbery (Personal) The Constabulary and BCUs

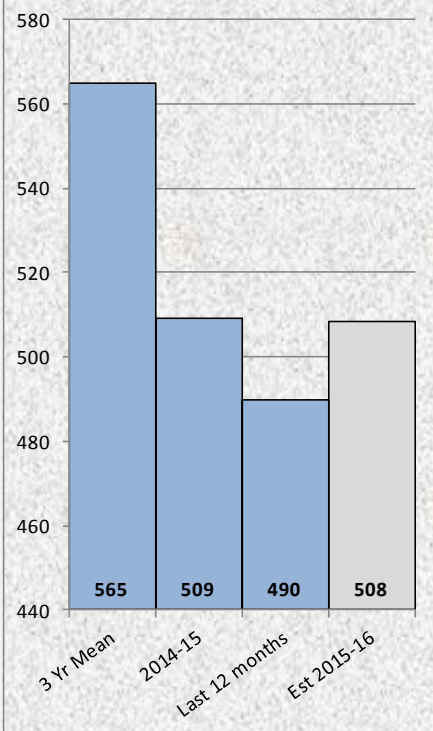


## CORA (V15) - Scrutiny Meeting Charts

Select Category

**Robbery (Personal)**

### The Constabulary



The 2015-16 Year-End Estimate of

**508**

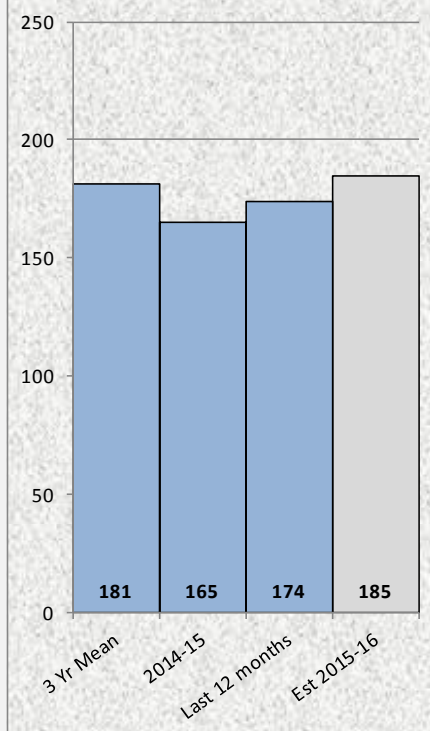
represents

a REDUCTION OF 0.1% on 2014-15

and

a REDUCTION OF 10.0% on the 3yr mean

### East Division



The 2015-16 Year-End Estimate of

**185**

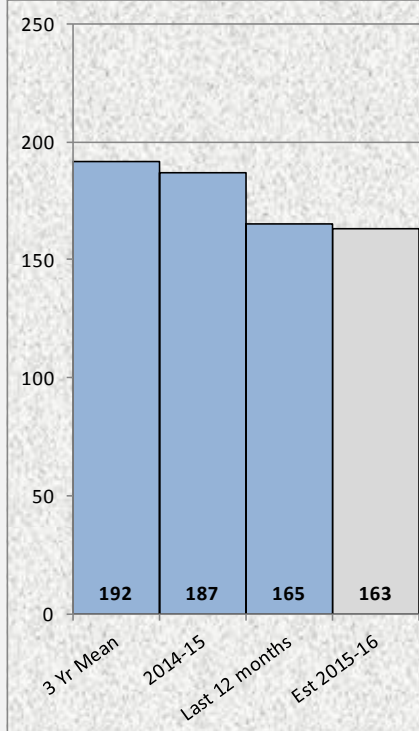
represents

an INCREASE OF 12.0% on 2014-15

and

an INCREASE OF 2.1% on the 3yr mean

### South Division



The 2015-16 Year-End Estimate of

**163**

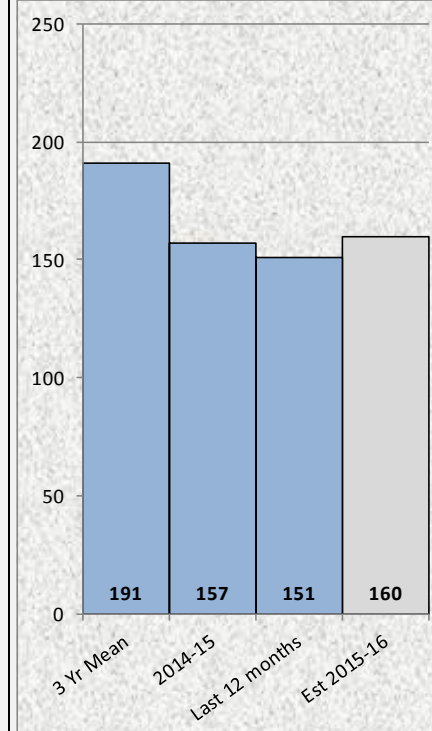
represents

a REDUCTION OF 12.6% on 2014-15

and

a REDUCTION OF 14.9% on the 3yr mean

### West Division



The 2015-16 Year-End Estimate of

**160**

represents

an INCREASE OF 2.0% on 2014-15

and

a REDUCTION OF 16.2% on the 3yr mean

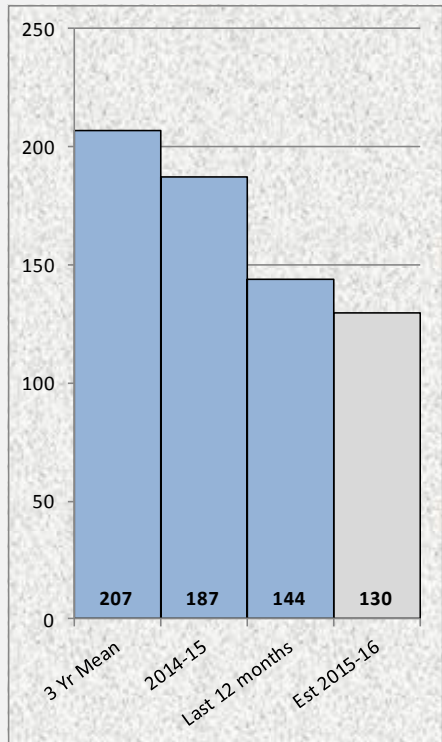
# Serious Assault (Domestic) The Constabulary and BCUs



## CORA (V15) - Scrutiny Meeting Charts

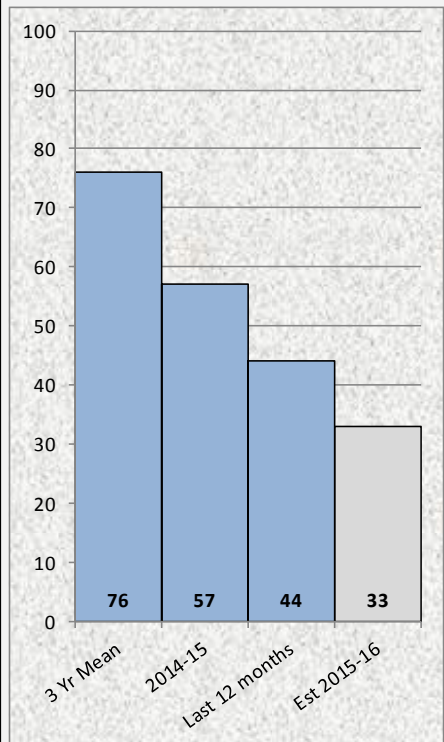
Select Category **Serious Assault (Domestic)**

### The Constabulary



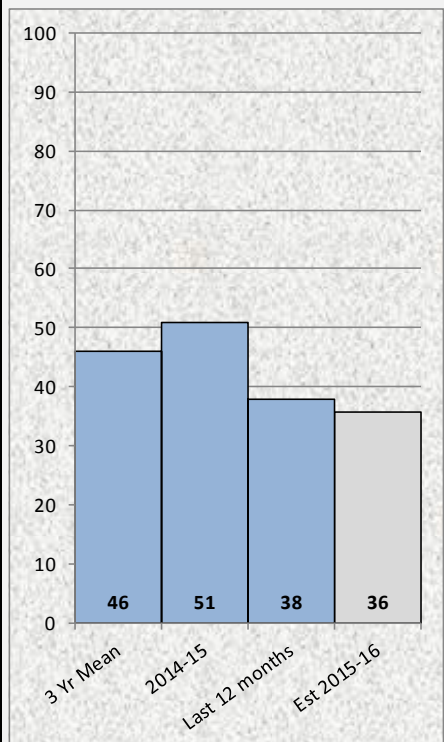
The 2015-16 Year-End Estimate of **130** represents a REDUCTION OF 30.5% on 2014-15 and a REDUCTION OF 37.2% on the 3yr mean

### East Division



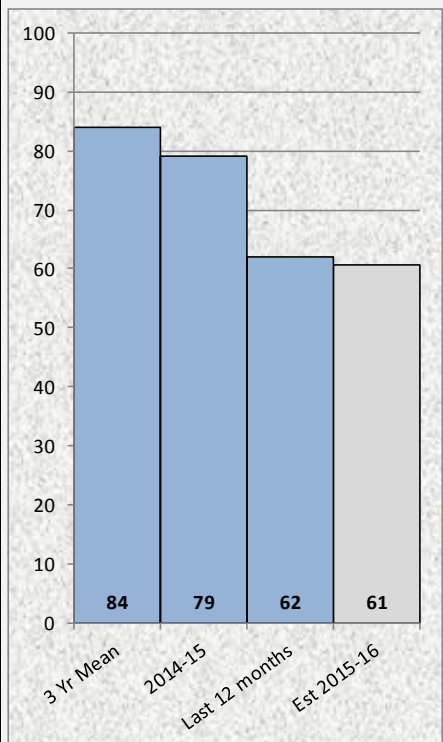
The 2015-16 Year-End Estimate of **33** represents a REDUCTION OF 42.0% on 2014-15 and a REDUCTION OF 56.5% on the 3yr mean

### South Division



The 2015-16 Year-End Estimate of **36** represents a REDUCTION OF 30.2% on 2014-15 and a REDUCTION OF 22.6% on the 3yr mean

### West Division



The 2015-16 Year-End Estimate of **61** represents a REDUCTION OF 23.3% on 2014-15 and a REDUCTION OF 27.9% on the 3yr mean



# Serious Assault (Non-Domestic) The Constabulary and BCUs

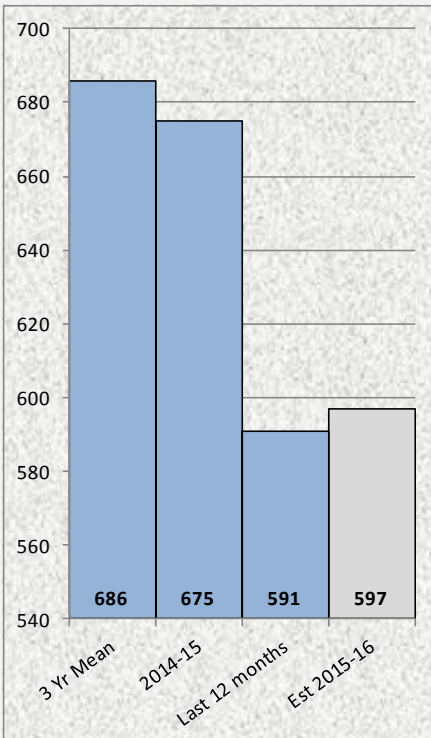


## CORA (V15) - Scrutiny Meeting Charts

Select Category

**Serious Assault (Non-Domestic)**

### The Constabulary



The 2015-16 Year-End Estimate of

**597**

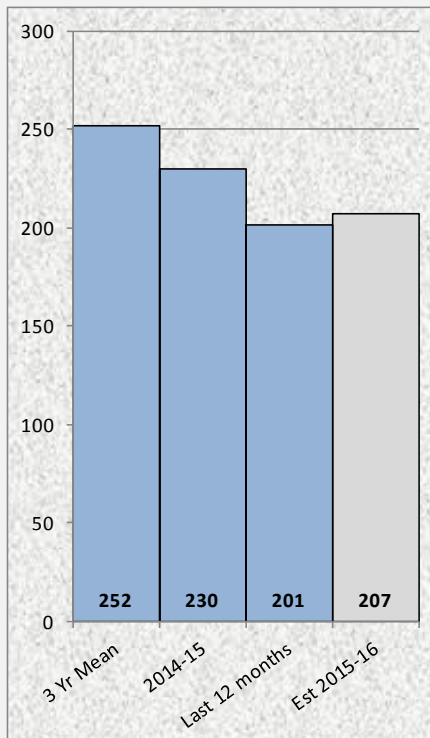
represents

a REDUCTION OF 11.6% on 2014-15

and

a REDUCTION OF 13.0% on the 3yr mean

### East Division



The 2015-16 Year-End Estimate of

**207**

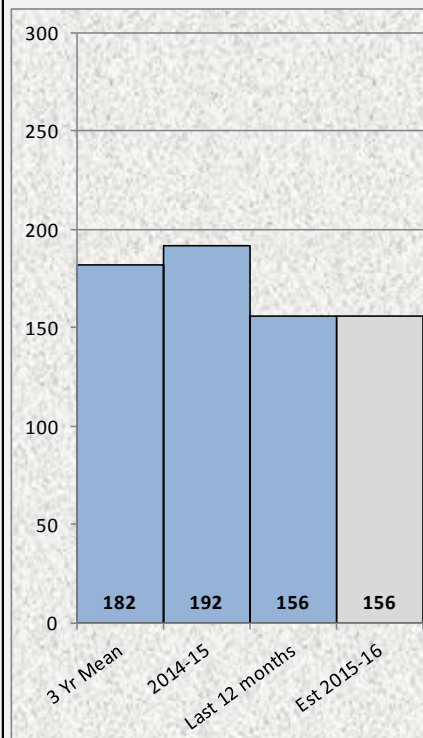
represents

a REDUCTION OF 9.9% on 2014-15

and

a REDUCTION OF 17.7% on the 3yr mean

### South Division



The 2015-16 Year-End Estimate of

**156**

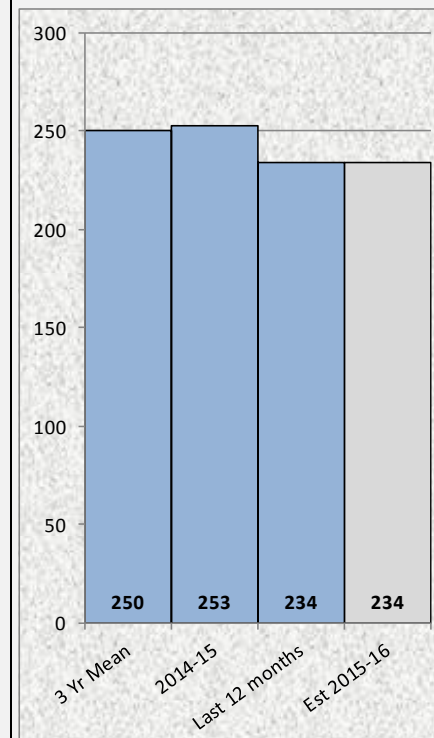
represents

a REDUCTION OF 18.7% on 2014-15

and

a REDUCTION OF 14.2% on the 3yr mean

### West Division



The 2015-16 Year-End Estimate of

**234**

represents

a REDUCTION OF 7.6% on 2014-15

and

a REDUCTION OF 6.4% on the 3yr mean

# Rape

## The Constabulary and BCUs

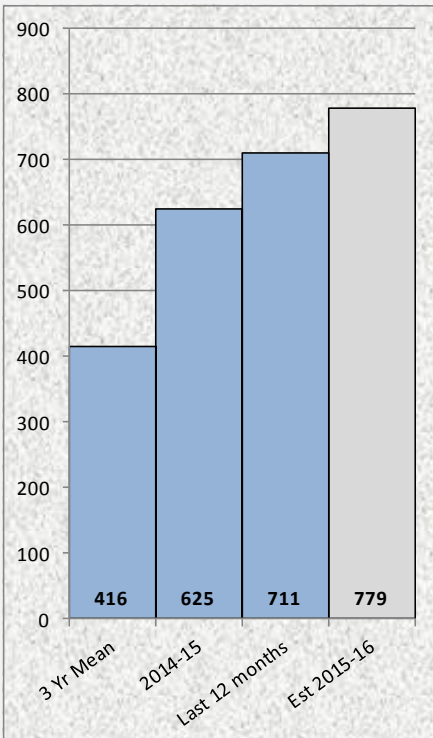


### CORA (V15) - Scrutiny Meeting Charts

Select Category

**Rape**

#### The Constabulary



The 2015-16 Year-End Estimate of **779**

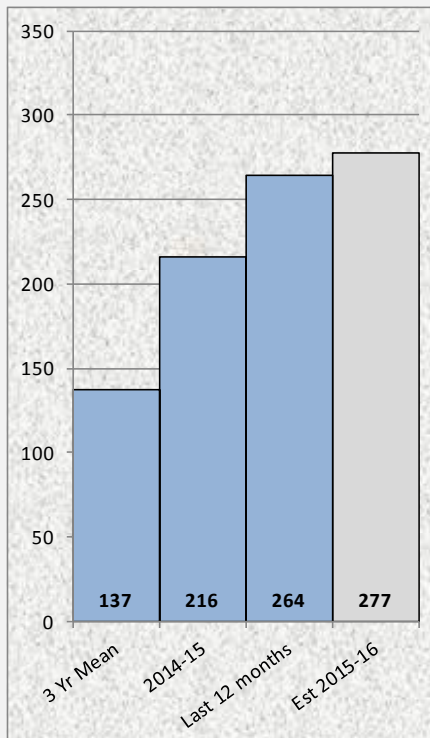
represents

an INCREASE OF 24.6% on 2014-15

and

an INCREASE OF 87.2% on the 3yr mean

#### East Division



The 2015-16 Year-End Estimate of **277**

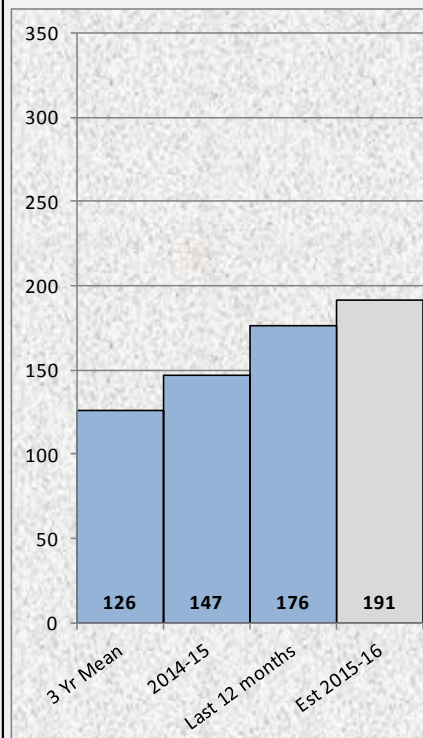
represents

an INCREASE OF 28.4% on 2014-15

and

an INCREASE OF 102.4% on the 3yr mean

#### South Division



The 2015-16 Year-End Estimate of **191**

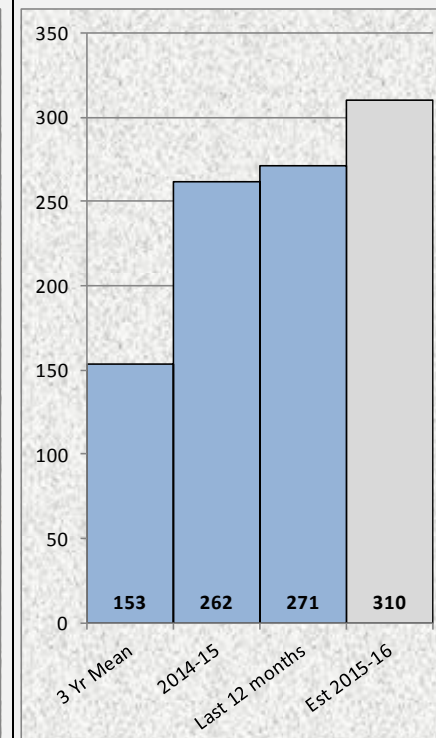
represents

an INCREASE OF 30.3% on 2014-15

and

an INCREASE OF 52.0% on the 3yr mean

#### West Division



The 2015-16 Year-End Estimate of **310**

represents

an INCREASE OF 18.3% on 2014-15

and

an INCREASE OF 102.5% on the 3yr mean

# Business Crime

## The Constabulary and BCUs

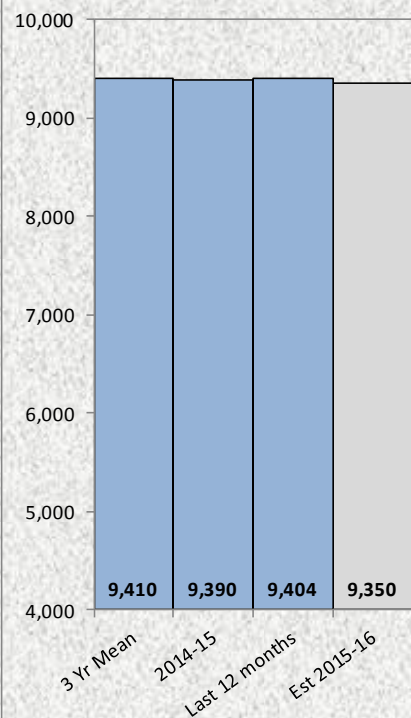


### CORA (V15) - Scrutiny Meeting Charts

Select Category

**Business Crime**

#### The Constabulary



The 2015-16 Year-End Estimate of **9,350**

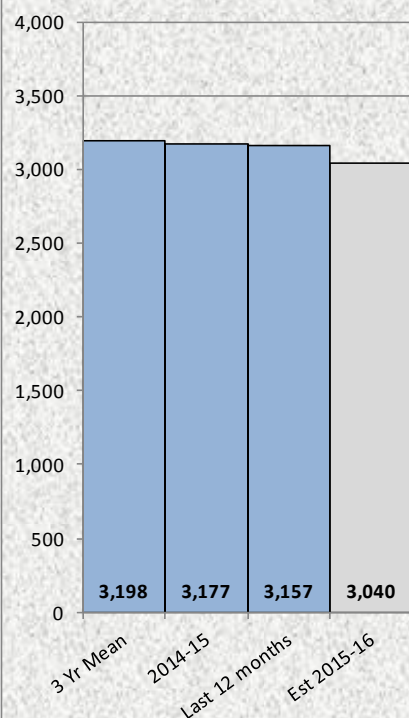
represents

a REDUCTION OF 0.4% on 2014-15

and

a REDUCTION OF 0.6% on the 3yr mean

#### East Division



The 2015-16 Year-End Estimate of **3,040**

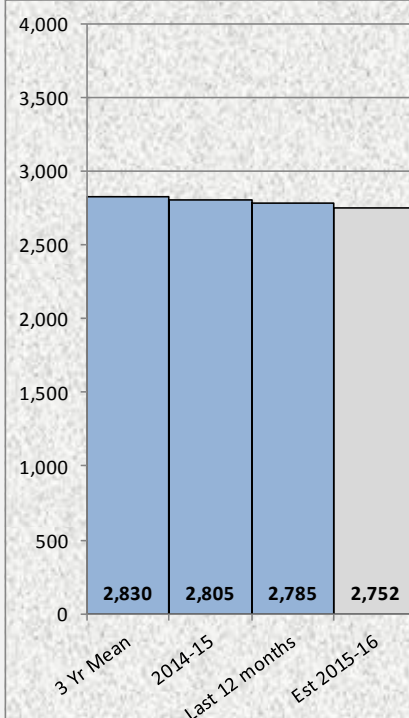
represents

a REDUCTION OF 4.3% on 2014-15

and

a REDUCTION OF 4.9% on the 3yr mean

#### South Division



The 2015-16 Year-End Estimate of **2,752**

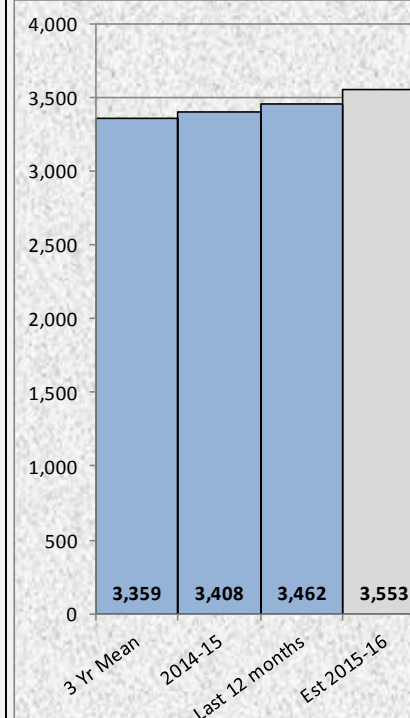
represents

a REDUCTION OF 1.9% on 2014-15

and

a REDUCTION OF 2.8% on the 3yr mean

#### West Division



The 2015-16 Year-End Estimate of **3,553**

represents

an INCREASE OF 4.3% on 2014-15

and

an INCREASE OF 5.8% on the 3yr mean



# *Scrutiny Meeting*

## *Crime Outcomes*

# Crime Outcomes - Force Level

## For Every 100 Crimes Recorded Sep-14 to Aug-15



### CORA (V15) - Outcomes Bar Chart

Select Area

The Constabulary

Select Period

Sep-14

to

Aug-15

Select Crime Categories

All Crime

Burglary (Dwelling)

Robbery (Personal)

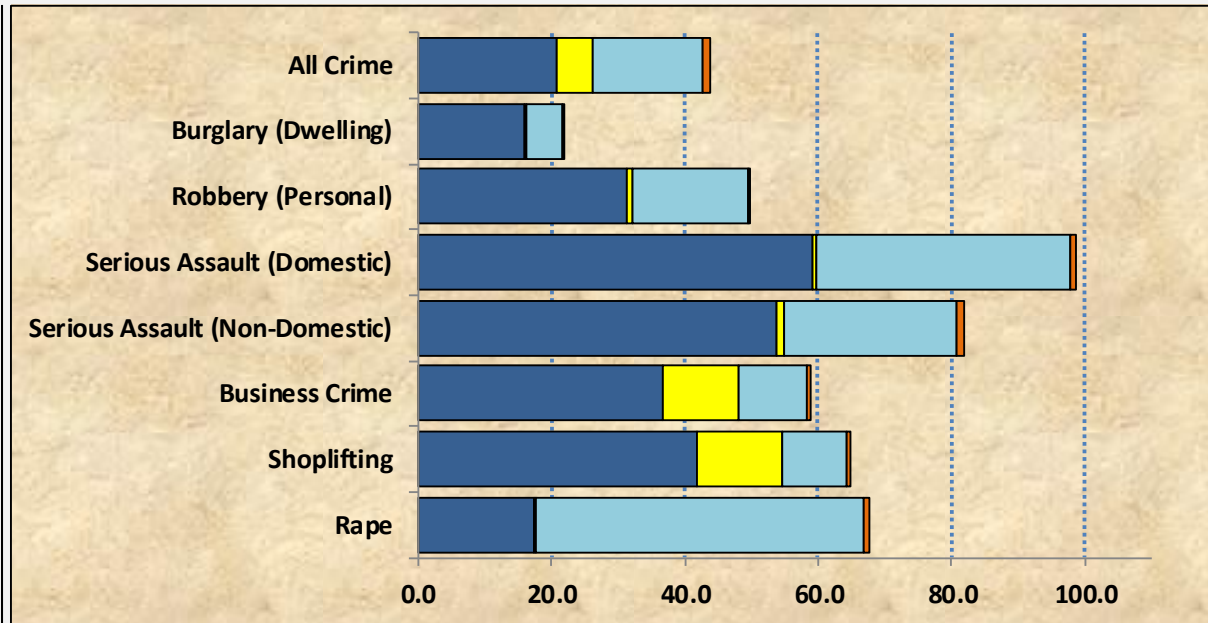
Serious Assault (Domestic)

Serious Assault (Non-Domestic)

Business Crime

Shoplifting

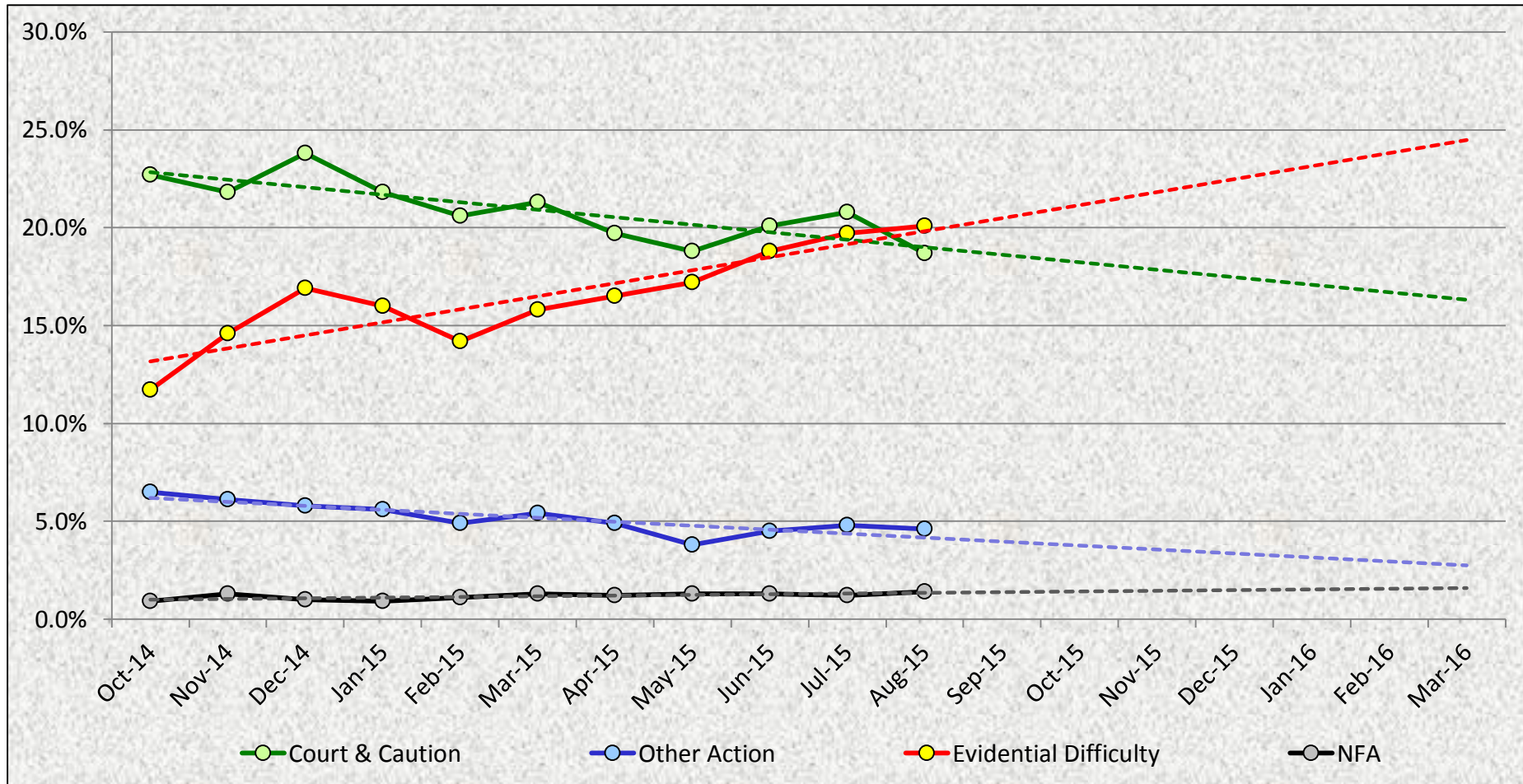
Rape



Crimes in each Outcome Group  
Per 100 Recorded Crimes

	Court & Caution	Other Action Outcome	Evidential Difficulty	NFA Outcomes	TOTAL
All Crime	20.90	5.24	16.49	1.20	43.83
Burglary (Dwelling)	15.91	0.28	5.58	0.04	21.81
Robbery (Personal)	31.43	0.82	17.35	0.20	49.80
Serious Assault (Domestic)	59.03	0.69	38.19	0.69	98.61
Serious Assault (Non-Domestic)	53.81	1.18	25.72	1.18	81.90
Business Crime	36.68	11.32	10.40	0.48	58.88
Shoplifting	41.92	12.75	9.51	0.53	64.72
Rape	17.44	0.28	49.09	0.84	67.65

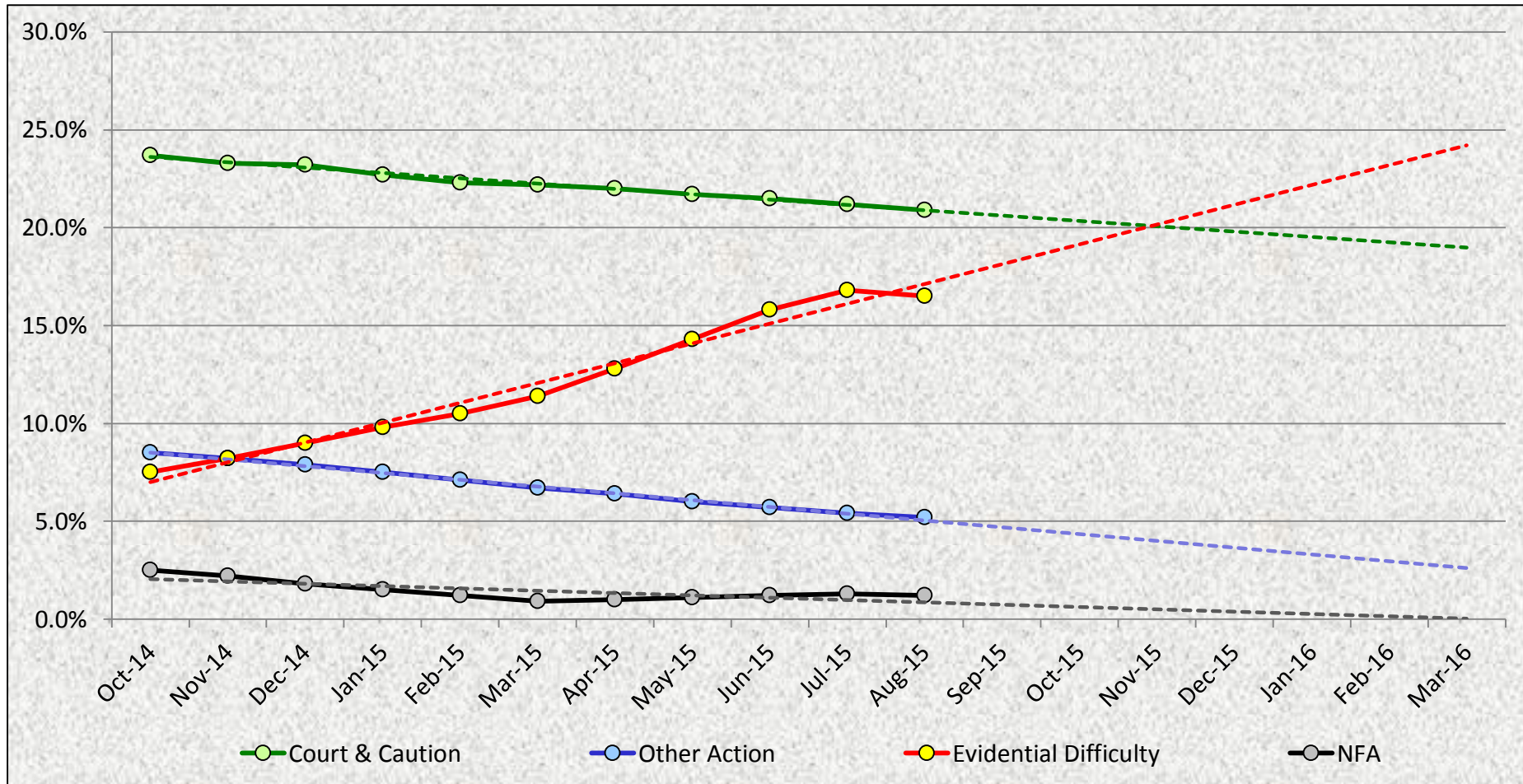
# Crime Outcomes – All Crime Force Level Time Series



The percentage is the outcome ratio for that type of outcome taken in isolation

The dotted lines are linear trend lines through each data series

# Crime Outcomes – All Crime Force Level Time Series – 12 MRT



The percentage is the outcome ratio for that type of outcome taken in isolation

The dotted lines are linear trend lines through each data series



# *Scrutiny Meeting*

## *Anti-Social Behaviour and Attendance at Grade 1 Incidents*



# The Constabulary

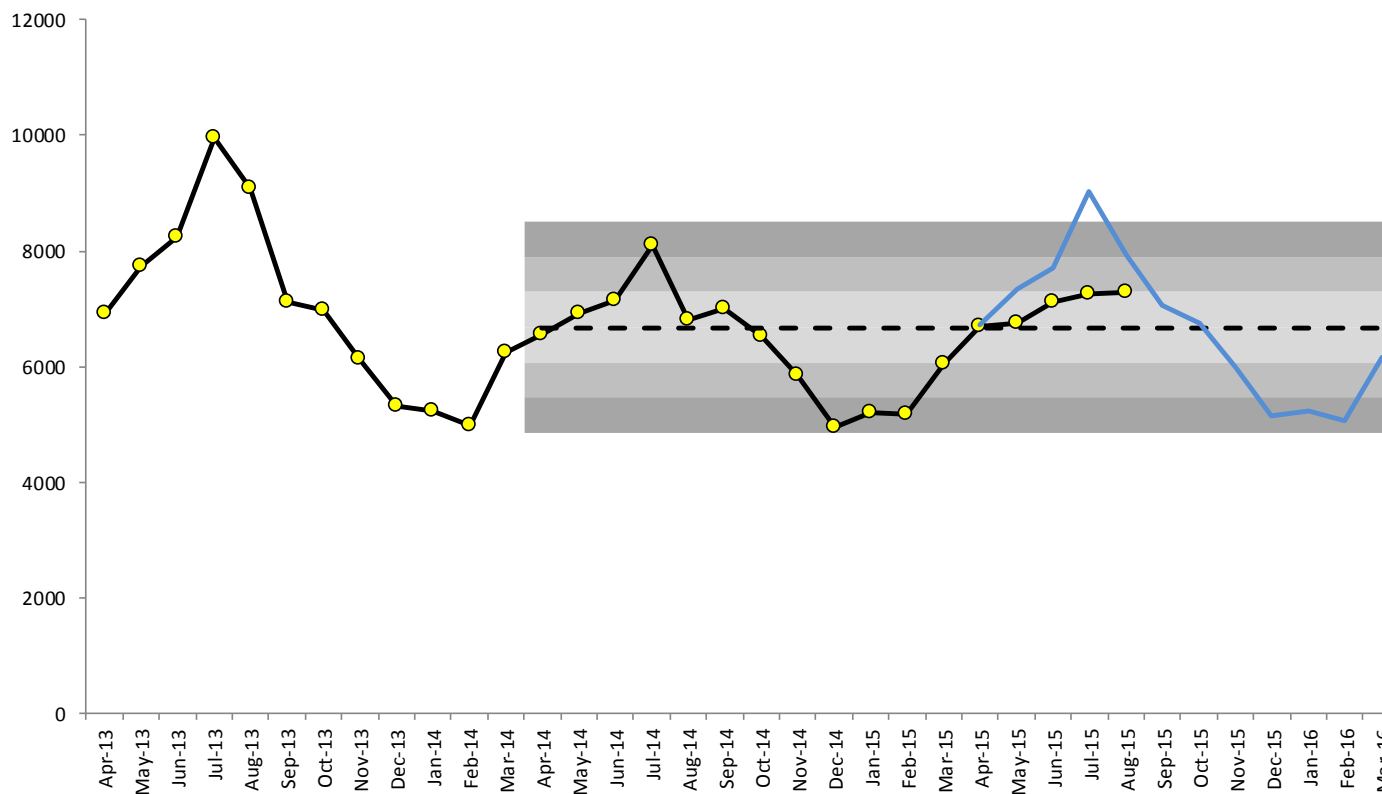
## ASB Time Series



SELECT AREA **The Constabulary**

SELECT ASB TYPE **All Anti-Social Behaviour**

Click on the drop-down arrows on the right-hand edges of the combo boxes and choose from the lists that appear.



MONTH	INCIDENTS	MONTH	INCIDENTS
Apr-13	6,912	Apr-15	6,702
May-13	7,731	May-15	6,755
Jun-13	8,253	Jun-15	7,116
Jul-13	9,942	Jul-15	7,265
Aug-13	9,088	Aug-15	7,275
Sep-13	7,103	Sep-15	0
Oct-13	6,977	Oct-15	0
Nov-13	6,134	Nov-15	0
Dec-13	5,328	Dec-15	0
Jan-14	5,230	Jan-16	0
Feb-14	4,965	Feb-16	0
Mar-14	6,236	Mar-16	0
Apr-14	6,554		
May-14	6,925		
Jun-14	7,152		
Jul-14	8,089		
Aug-14	6,799		
Sep-14	7,001		
Oct-14	6,533		
Nov-14	5,857		
Dec-14	4,959		
Jan-15	5,211		
Feb-15	5,182		
Mar-15	6,056		

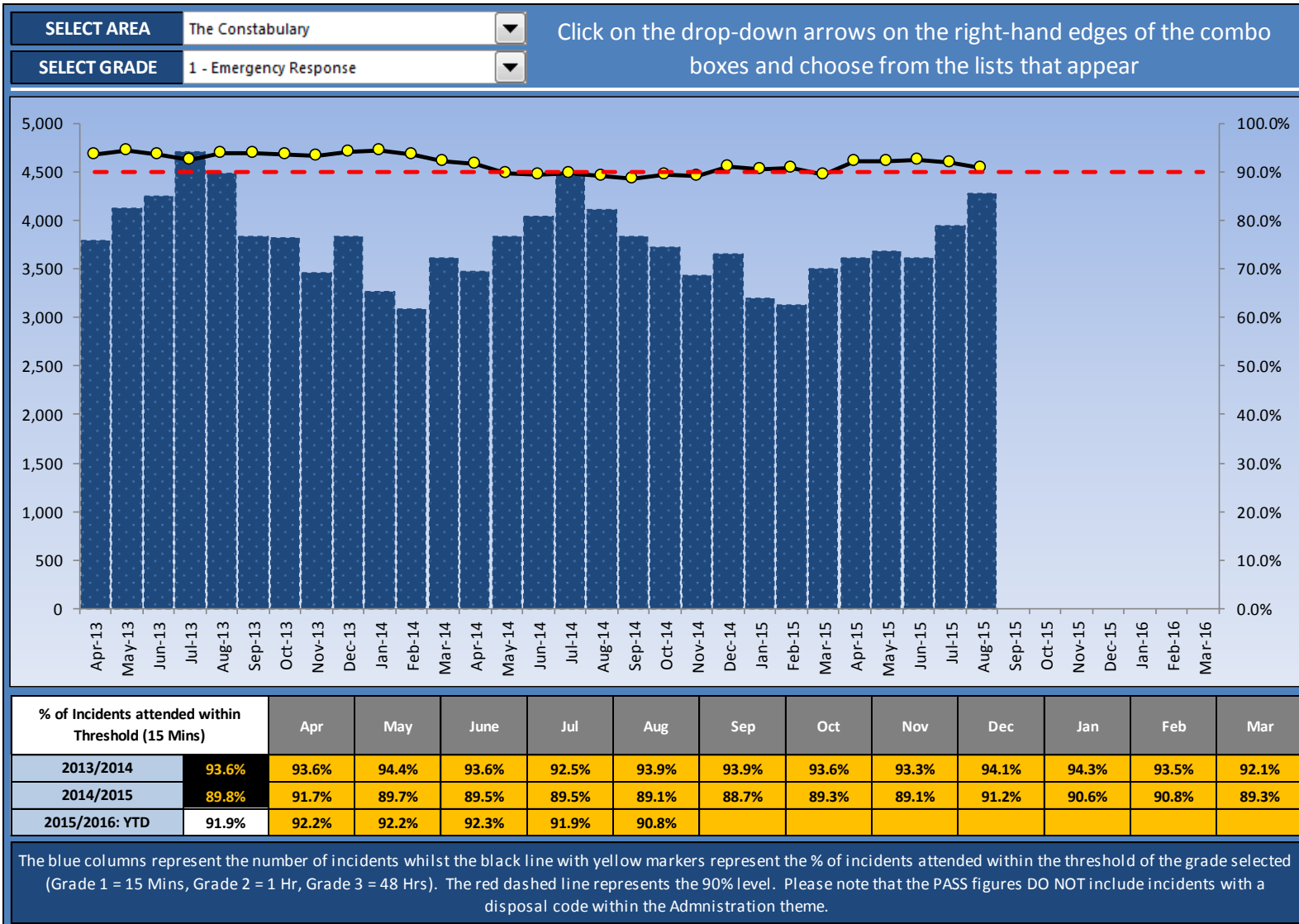
The Table below shows the estimates for each month (the blue line in the chart) and the actual numbers recorded.

	Apr	May	Jun	Jul	Aug	Sep	Oct	Nov	Dec	Jan	Feb	Mar
Estimates	6,733	7,328	7,703	9,016	7,944	7,052	6,755	5,996	5,144	5,221	5,074	6,146
Actual	6,702	6,755	7,116	7,265	7,275	0	0	0	0	0	0	0

The blue line in the chart represents an estimated number of ASB incidents for each calendar month based on the average number of incidents recorded in each month over the last two years

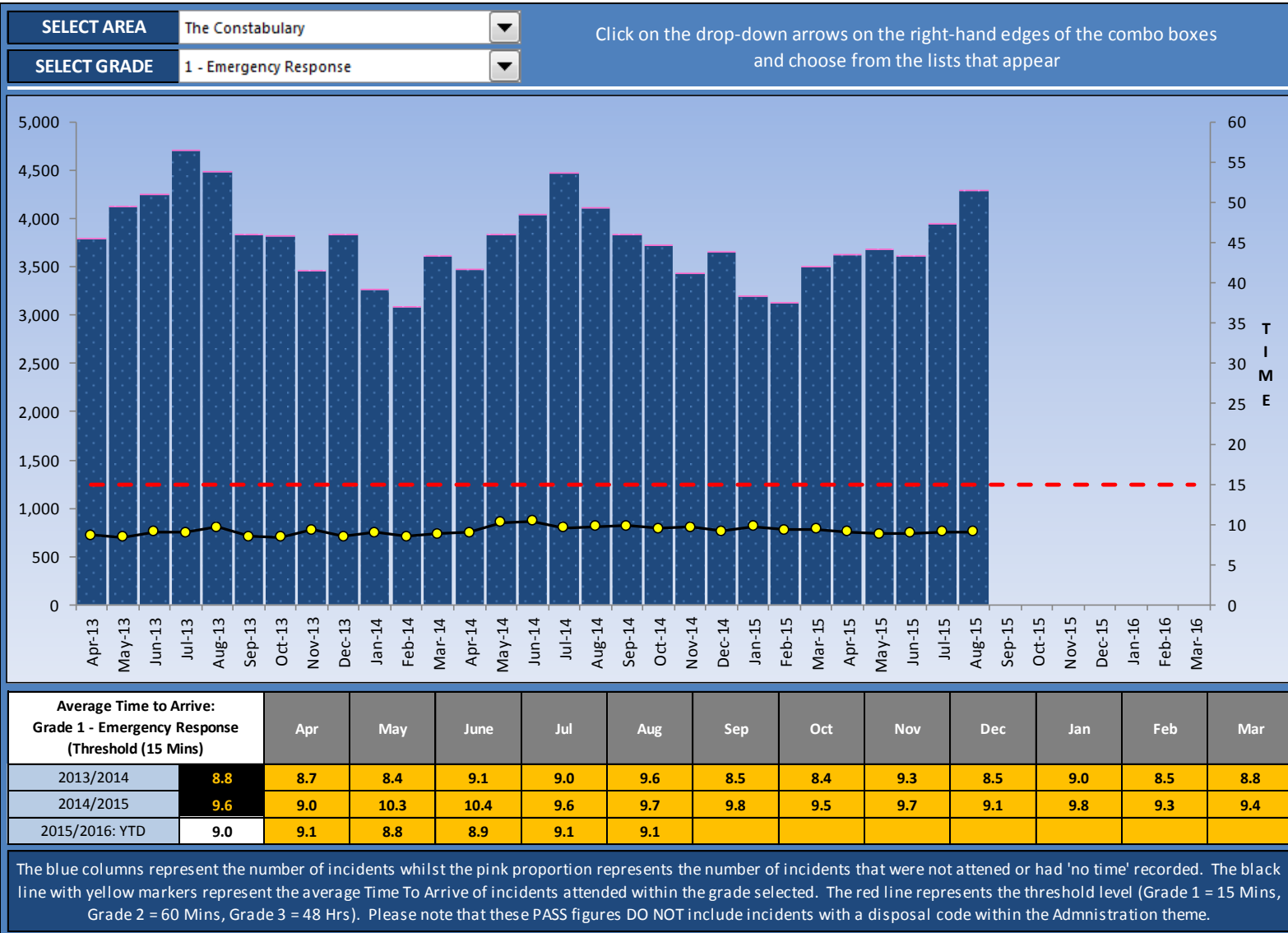
# The Constabulary

## Grade 1 - Emergency Response – PASS



# The Constabulary

## Grade 1 - Emergency Response – Time To Arrive





# *Scrutiny Meeting*

## *Satisfaction*

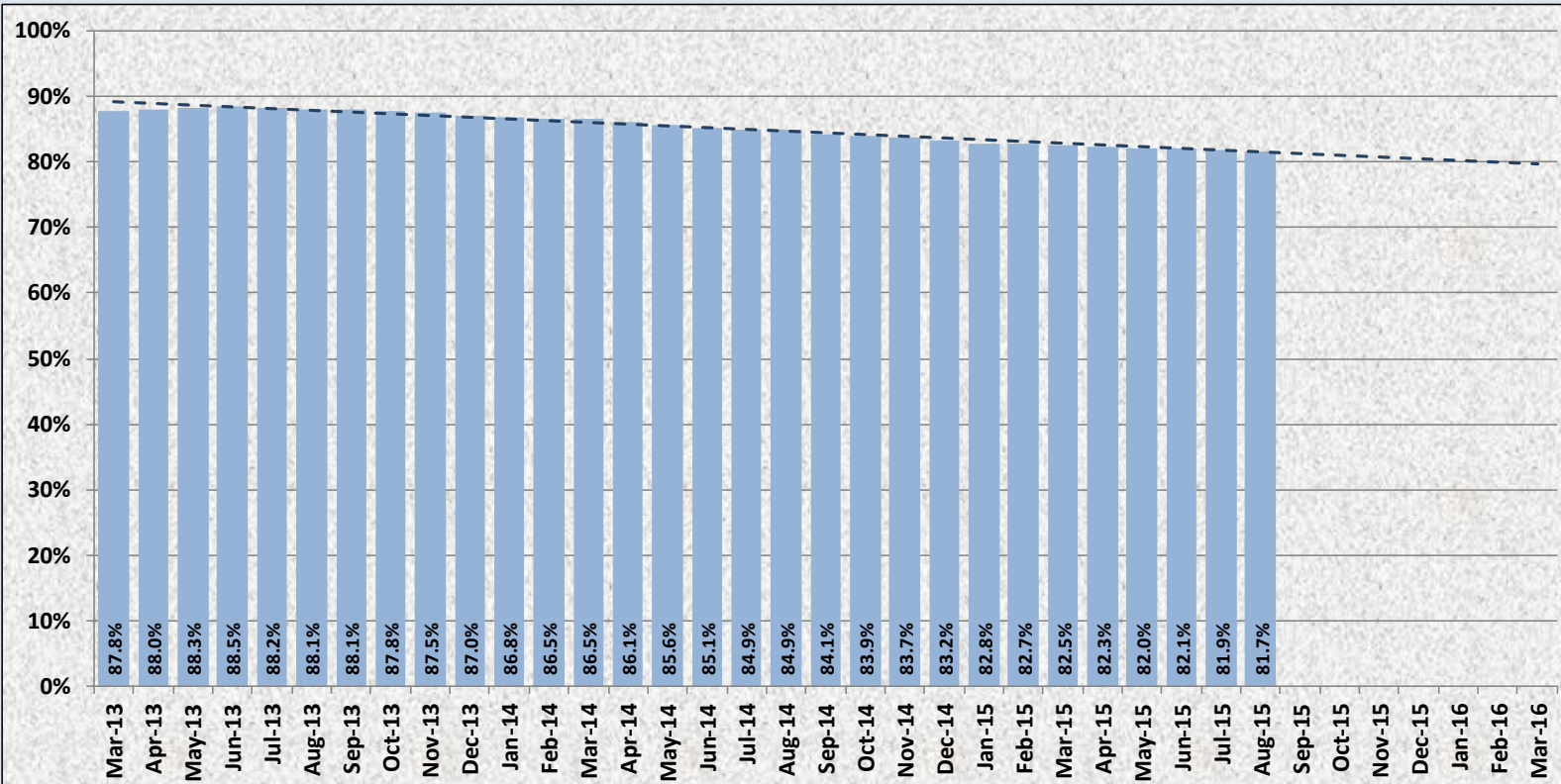
# The Constabulary – User Satisfaction

## Four Groups Combined



### Time Series - Any Demographic Group - No Comparison

**Area**  **User Group**  **Select the demographic you wish to display in the chart**  
**Aspect**  **Satisfaction**  **Demographic**



The blue columns represent the twelve-month rolling result for the selected parameters. The result for each month is given in the chart and also in the table below the chart. The blue dashed line is a linear regression line that defines the linear trend through all the known results. Reading off the value represented by the right hand end of the line provides an estimate of what the satisfaction level will be for the selected parameters at the end of the current year.

12MRT Results	Apr	May	Jun	Jul	Aug	Sep	Oct	Nov	Dec	Jan	Feb	Mar
2013-14	88.0%	88.3%	88.5%	88.2%	88.1%	88.1%	87.8%	87.5%	87.0%	86.8%	86.5%	86.5%
2014-15	86.1%	85.6%	85.1%	84.9%	84.9%	84.1%	83.9%	83.7%	83.2%	82.8%	82.7%	82.5%
2015-16	82.3%	82.0%	82.1%	81.9%	81.7%							

# The Constabulary – User Satisfaction Anti-Social Behaviour

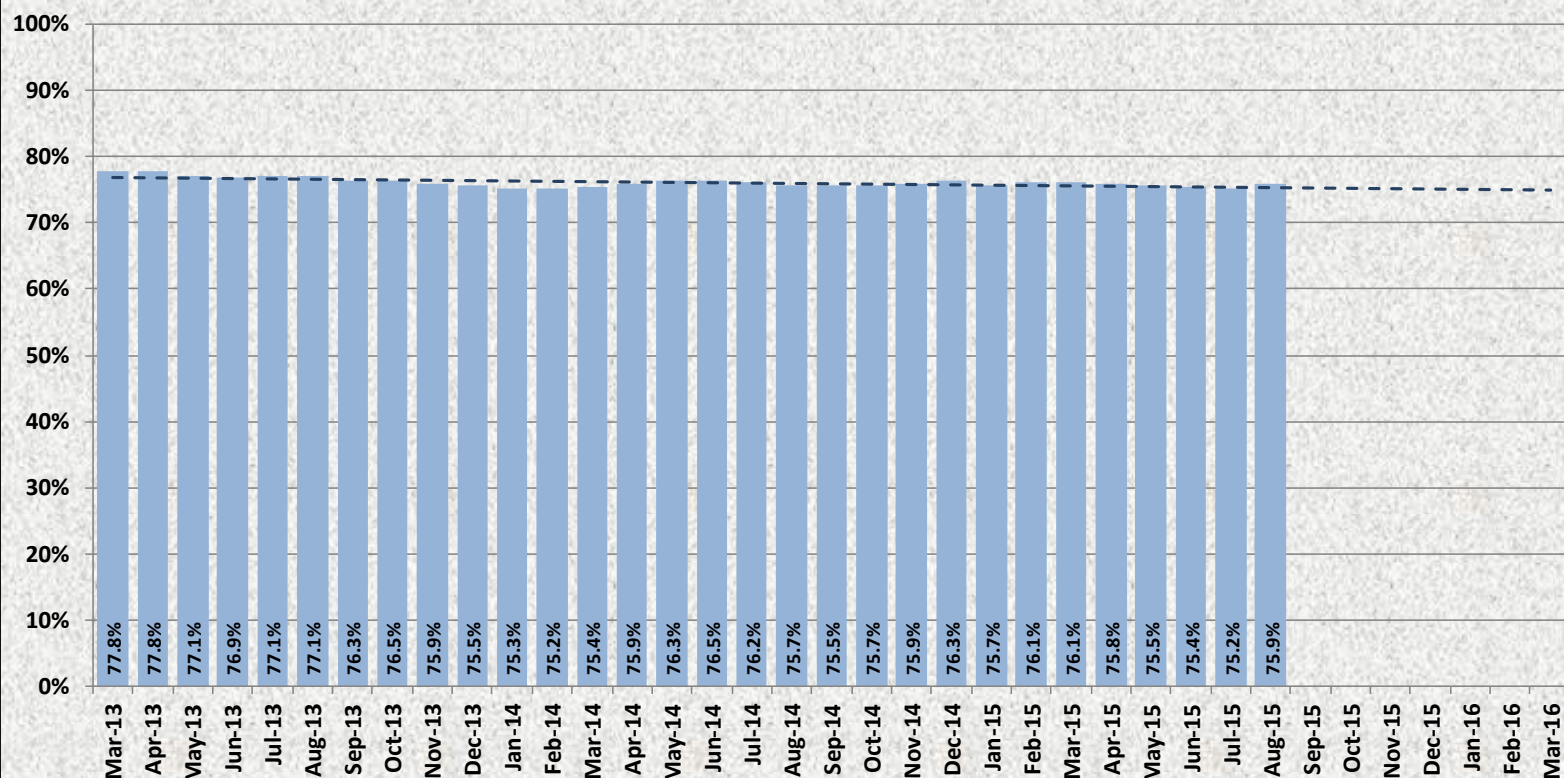


**Lancashire Constabulary**

police and communities together

## Time Series - Any Demographic Group - No Comparison

**Area**  **User Group**  Select the demographic you wish to display in the chart  
**Aspect**  **Satisfaction**  **Demographic**



The blue columns represent the twelve-month rolling result for the selected parameters. The result for each month is given in the chart and also in the table below the chart. The blue dashed line is a linear regression line that defines the linear trend through all the known results. Reading off the value represented by the right hand end of the line provides an estimate of what the satisfaction level will be for the selected parameters at the end of the current year.

12MRT Results	Apr	May	Jun	Jul	Aug	Sep	Oct	Nov	Dec	Jan	Feb	Mar
2013-14	77.8%	77.1%	76.9%	77.1%	77.1%	76.3%	76.5%	75.9%	75.5%	75.3%	75.2%	75.4%
2014-15	75.9%	76.3%	76.5%	76.2%	75.7%	75.5%	75.7%	75.9%	76.3%	75.7%	76.1%	76.1%
2015-16	75.8%	75.5%	75.4%	75.2%	75.9%							

# The Constabulary

## Overall Confidence in the Constabulary

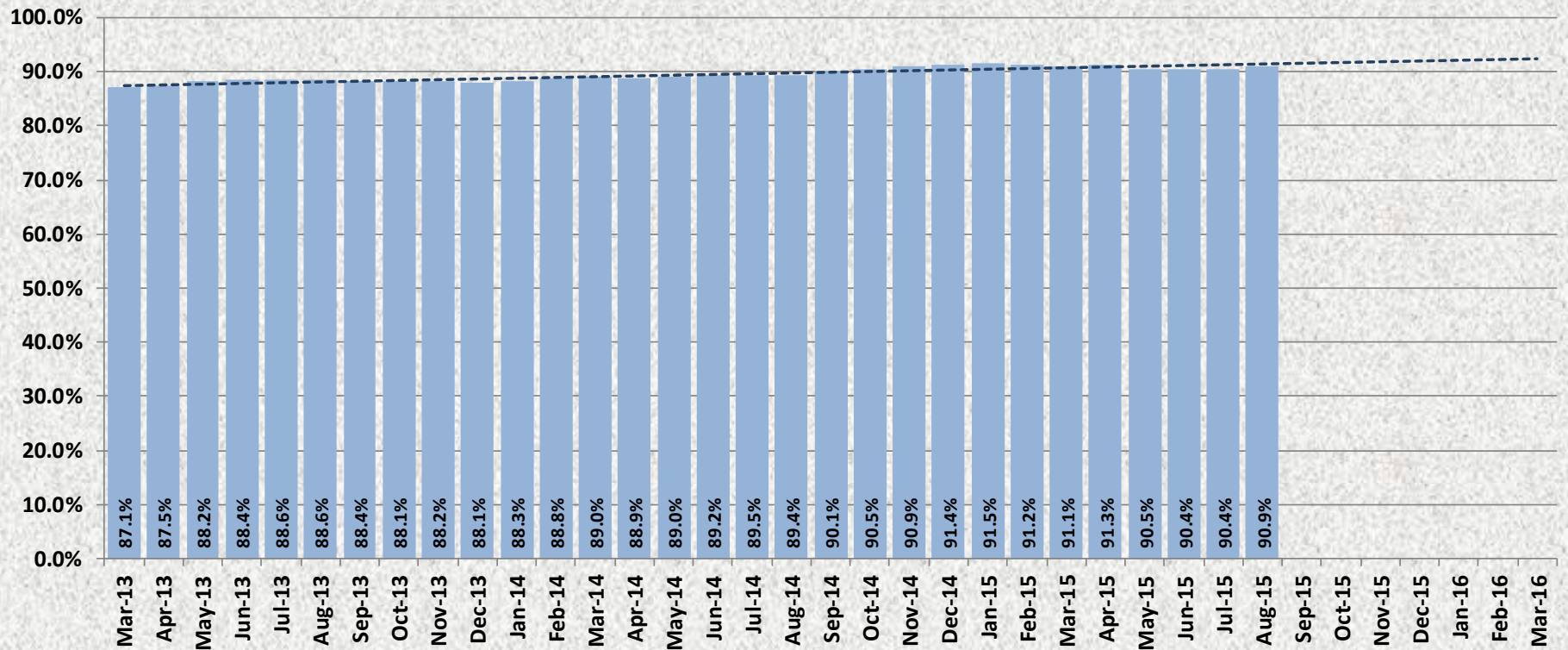


### Confidence File - Time Series Bar Chart

Select Area **The Constabulary**

Select Aspect **Overall Confidence**

The blue columns represent the twelve-month rolling results for the selected parameters. The percentages are the proportions of all survey respondents who were fairly or very confident in the aspect of service specified.



12MRT Results	Apr	May	Jun	Jul	Aug	Sep	Oct	Nov	Dec	Jan	Feb	Mar
2013-14	87.5%	88.2%	88.4%	88.6%	88.6%	88.4%	88.1%	88.2%	88.1%	88.3%	88.8%	89.0%
2014-15	88.9%	89.0%	89.2%	89.5%	89.4%	90.1%	90.5%	90.9%	91.4%	91.5%	91.2%	91.1%
2015-16	91.3%	90.5%	90.4%	90.4%	90.9%							



Lancashire  
Constabulary

police and communities together

# *Strategic Scrutiny Meeting*

***23<sup>rd</sup> September 2015***